

COMMUNITY FOOD RESOURCE GUIDE SAN LUIS OBISPO COUNTY

OCTOBER, 2011

PREPARED BY:

KIM PASCIUTO

CENTRAL COAST AGRICULTURAL NETWORK

SAN LUIS OBISPO, CA

WWW.CENTRALCOASTGROWN.ORG

COMMUNITY FOOD RESOURCE ASSESSMENT

TABLE OF CONTENTS

WHAT IS A COMMUNITY FOOD RESOURCE ASSESSMENT?.....	PAGE 1
Purpose, Analysis, Indicators	
Flow Chart	
SECTION 1: GROW	PAGE 4
Commercial Agricultural Resources in SLO County	
2007 Census of Agriculture for SLO County	
2009 CA Department of Food and Agriculture Statistics by Crop	
2010 SLO Agricultural Commissioner’s Annual Report	
Top 20 Crops	
Comparison of Valuation of Crops Last 10 Years	
Community Gardens	
School Gardens	
SLO County Fisheries	
SECTION 2: DISTRIBUTE.....	PAGE 21
Food Cooperatives	
SLO County Wholesalers and Distributors	
2009 SLO County Warehousing and Storage	
SECTION 3: PROCESS	PAGE 27
2009 SLO County Manufacturers of Food and Beverages	
2011 SLO County Environmental Health Department Listing of	
Commissaries for Public Use	
CA Department of Public Health List of SLO County Businesses	
with Valid Processed Food Registration	
SECTION 4: BUY.....	PAGE 43
Farmers’ Markets	
Community Supported Agriculture	
SLO County Office of Education Food Service Directors	
Food Bank Coalition Distribution Sites	

Assessment of Community Food Production Resources

Purpose

Local agricultural and food production resources can play an important role in community food security. (See box 13.) When implemented together with a strong Federal nutrition safety net and emergency food assistance programs that alleviate food insecurity and hunger over the short term, strengthening your community's agricultural system can, over the long term, boost the effectiveness of Federal food assistance and education programs. This goal can be accomplished by increasing the availability of high-quality, affordable food within a community, offering small farmers an opportunity to maintain economic viability by supplying the local market with fresh foods, strengthening economic and social ties between farms and urban residents, and channeling a larger share of residents' food spending back to the local economy.

This section discusses the data needed to conduct an assessment of community food production. Key questions include

- Does the community have food production, value-added processing, or food distribution resources?
- Do low-income households have the opportunity to participate in community gardens or other food production activities?
- Are there any school-based gardening programs?
- Are locally produced foods sold through local food retailers and restaurants?
- Does the local school district purchase foods from local producers?
- Are locally produced foods used by other institutional food service outlets, such as colleges, prisons, and hospitals?

Box 13

What are some different types of community food production resources?

Community gardens: A community garden is any shared space where people come together to grow vegetables, flowers, or any plants. Through community gardening, individuals can produce fresh vegetables, beautify their neighborhoods, and make changes in their own communities in tangible, effective ways. Community gardens have a long history of success in all sorts of areas, even in the most dense cities. Whether planting a few seeds in a window box or organizing the transformation of a trash-filled vacant lot into a space for an entire neighborhood to grow food, community gardening can be a worthwhile and plausible project for many people. The most direct benefit of community gardening is the production of fresh, nutritious produce; however, many gardens become centers for education, food assistance programs, local marketing, and small business development.

Community-Supported Agriculture: Community-supported agriculture (CSA) is a partnership of mutual commitment between a farm and a community of supporters, which provides a direct link between the production and consumption of food. Supporters cover a farm's yearly operating budget by purchasing a share of the season's harvest. CSA members make a commitment to support the farm throughout the season and assume the costs, risks, and bounty of growing food along with the farmer or grower. Members help pay for seeds, fertilizer, water, equipment maintenance, and labor. In return, the farm provides, to the best of its ability, a healthy supply of seasonal fresh produce throughout the growing season.

Analysis

Exhibit 3 presents the framework for this assessment. It introduces key questions, possible response paths, answers, and the implications of various answers. The highlighted elements indicate the presence of a specific type of problem and alert community leaders to the possibility of a potential food insecurity problem. For this assessment, there is one potential problem—the viability of local food production, which includes local food producers, community gardens, community-supported agriculture, farmers, dairies, and fisheries. After determining whether such resources exist in your community, you will want to explore further to find out whether they are supported by the community (politically and financially) and whether the locally produced food is available and affordable to all community members, including low-income residents. Negative answers to any of these key questions indicate a potential food production problem.

The assessment of community food production will begin with a profile of existing local food production resources. It then progresses to ask whether local food producers are supported and used by the community. The political and economic support of community members and

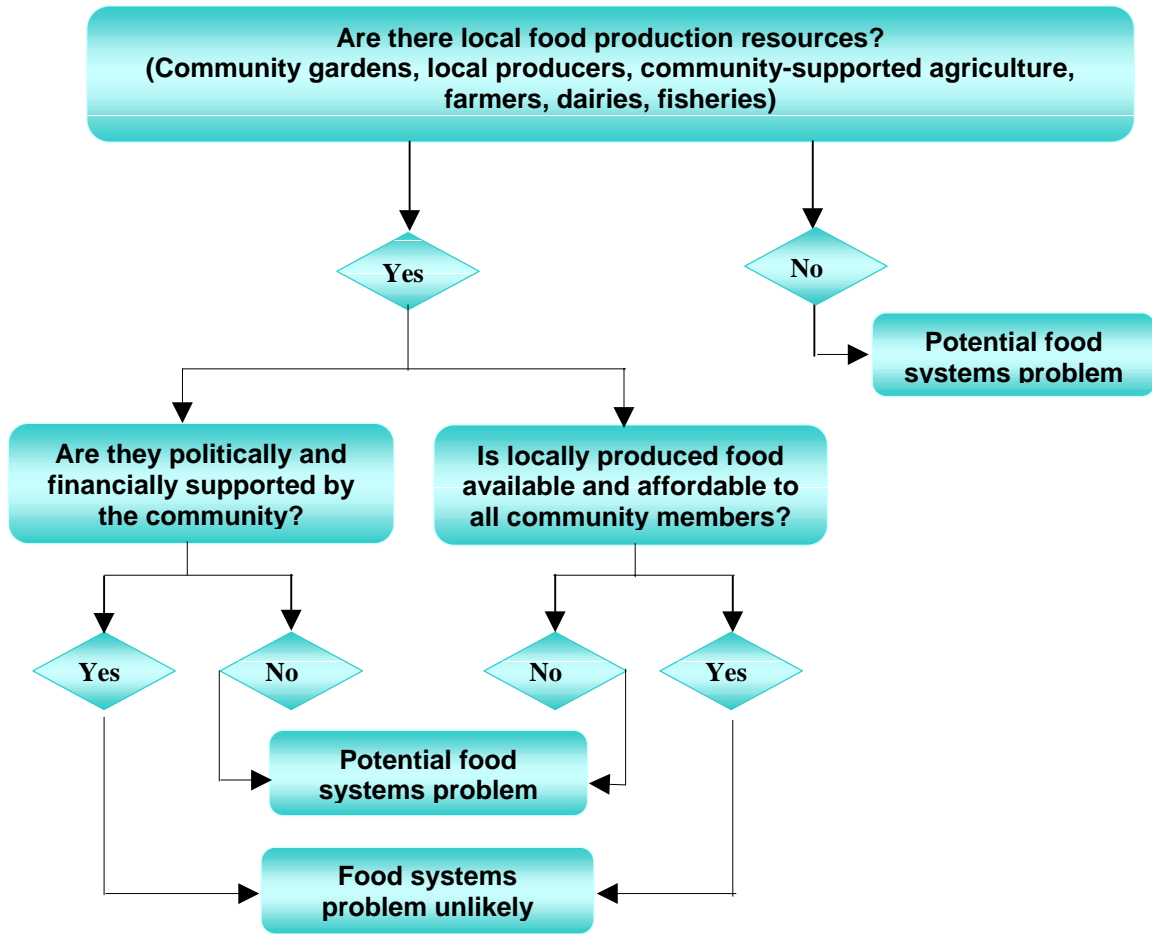
organizations plays a large role in the success of local food producers. To assess the community's commitment to local food producers, you can conduct focus groups with community household members, key representatives from community organizations, and food retailers.

The analysis also can use mapping techniques to identify the location of food production resources and to compare this information with food markets and other community retailing sites (farmers' markets, co-ops, etc.) as well as to community transportation resources, to determine whether all residents have access to community-produced foods.

Indicators

The majority of the data on local food production resources can be found from existing data resources. Data on local food production and marketing infrastructures (i.e., the linkages between local food producers, food processors, food retailers, and other marketing outlets like local schools, prisons, and hospitals) will be most easily explored through conversations with farmers and others involved with the local food system in the focus group on community food production. You also can interview food service managers with the local school district, prisons, and hospitals.

Exhibit 3. Community Food Production Assessment



SECTION 1: GROW

Commercial Agricultural Resources in SLO County

2007 Census of Agriculture for SLO County

2009 CA Department of Food and Agriculture Statistics by Crop

2010 SLO Agricultural Commissioner's Annual Report

Top 20 Crops

Comparison of Valuation of Crops Last 10 Years

Community Gardens

School Gardens

SLO County Fisheries

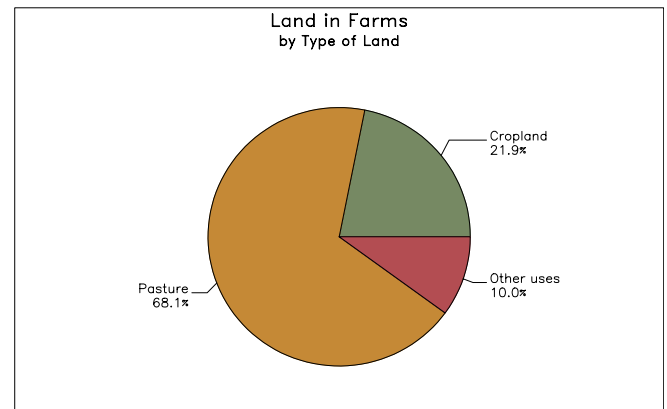
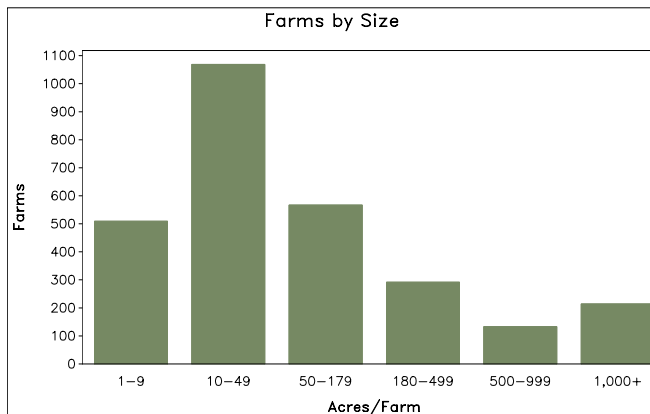
2007 CENSUS OF AGRICULTURE

County Profile

San Luis Obispo County California



	2007	2002	% change
Number of Farms	2,784	2,322	+ 20
Land in Farms	1,369,604 acres	1,318,142 acres	+ 4
Average Size of Farm	492 acres	568 acres	- 13
Market Value of Products Sold	\$560,607,000	\$396,394,000	+ 41
Crop Sales \$522,274,000 (93 percent)			
Livestock Sales \$38,334,000 (7 percent)			
Average Per Farm	\$201,368	\$170,712	+ 18
Government Payments	\$4,492,000	\$2,951,000	+ 52
Average Per Farm Receiving Payments	\$19,701	\$11,051	+ 78



2007 CENSUS OF AGRICULTURE

County Profile

San Luis Obispo County – California

Ranked items among the 58 state counties and 3,079 U.S. counties, 2007

Item	Quantity	State Rank	Universe ¹	U.S. Rank	Universe ¹
MARKET VALUE OF AGRICULTURAL PRODUCTS SOLD (\$1,000)					
Total value of agricultural products sold	560,607	17	58	48	3,076
Value of crops including nursery and greenhouse	522,274	15	58	21	3,072
Value of livestock, poultry, and their products	38,334	21	57	983	3,069
VALUE OF SALES BY COMMODITY GROUP (\$1,000)					
Grains, oilseeds, dry beans, and dry peas	(D)	27	48	(D)	2,933
Tobacco	-	-	-	-	437
Cotton and cottonseed	-	-	13	-	626
Vegetables, melons, potatoes, and sweet potatoes	189,713	10	55	13	2,796
Fruits, tree nuts, and berries	204,011	17	56	22	2,659
Nursery, greenhouse, floriculture, and sod	121,550	9	56	23	2,703
Cut Christmas trees and short rotation woody crops	(D)	(D)	40	(D)	1,710
Other crops and hay	(D)	23	56	(D)	3,054
Poultry and eggs	157	35	56	1,308	3,020
Cattle and calves	28,693	12	57	446	3,054
Milk and other dairy products from cows	(D)	32	47	(D)	2,493
Hogs and pigs	125	13	54	1,321	2,922
Sheep, goats, and their products	948	16	56	126	2,998
Horses, ponies, mules, burros, and donkeys	2,933	7	55	50	3,024
Aquaculture	(D)	(D)	46	(D)	1,498
Other animals and other animal products	103	36	55	985	2,875
TOP CROP ITEMS (acres)					
Grapes	39,616	9	52	9	2,040
Vegetables harvested for sale	29,819	11	55	29	2,794
Forage - land used for all hay and haylage, grass silage, and greenchop	17,883	19	57	1,142	3,060
Barley for grain	11,228	1	30	83	1,154
Broccoli	8,205	3	35	4	855
TOP LIVESTOCK INVENTORY ITEMS (number)					
Cattle and calves	56,830	19	57	474	3,060
Horses and ponies	8,816	4	57	17	3,066
Sheep and lambs	8,810	15	56	124	2,891
Goats, all	6,909	6	56	48	3,023
Rabbits and their pelts	(D)	3	48	11	2,574

Other County Highlights

Economic Characteristics	Quantity	Operator Characteristics	Quantity
Farms by value of sales:		Principal operators by primary occupation:	
Less than \$1,000	843	Farming	1,380
\$1,000 to \$2,499	184	Other	1,404
\$2,500 to \$4,999	251		
\$5,000 to \$9,999	218	Principal operators by sex:	
\$10,000 to \$19,999	264	Male	2,173
\$20,000 to \$24,999	93	Female	611
\$25,000 to \$39,999	180		
\$40,000 to \$49,999	87	Average age of principal operator (years)	59.2
\$50,000 to \$99,999	221		
\$100,000 to \$249,999	203	All operators by race ² :	
\$250,000 to \$499,999	109	American Indian or Alaska Native	51
\$500,000 or more	131	Asian	103
Total farm production expenses (\$1,000)	517,763	Black or African American	11
Average per farm (\$)	185,978	Native Hawaiian or Other Pacific Islander	12
		White	4,237
Net cash farm income of operation (\$1,000)	75,957	More than one race	36
Average per farm (\$)	27,284	All operators of Spanish, Hispanic, or Latino Origin ²	337

See "Census of Agriculture, Volume 1, Geographic Area Series" for complete footnotes, explanations, definitions, and methodology.

(D) Cannot be disclosed. (Z) Less than half of the unit shown.

¹ Universe is number of counties in state or U.S. with item. ² Data were collected for a maximum of three operators per farm.

FRUIT & NUT CROPS

CROP	YEAR	ACREAGE		PRODUCTION		UNIT	PER UNIT	TOTAL
		PLANTED	BEARING/ HARVESTED	PER ACRE	TOTAL			
Avocados	2010	4,800	4,319	5.242	22,640	Ton	\$1,584.00	\$35,862,000
	2009	4,800	3,919	0.922	3,613	Ton	\$2,551.00	\$9,218,000
Grapes, Wine (All)	2010	36,253	33,827		173,885	Ton		173,558,000
	2009	36,276	34,100		147,380	Ton		166,378,000
Chardonnay	2010		3,381	5.712	19,312	Ton	1,195.00	23,078,000
	2009		3,481	6.192	21,554	Ton	1,289.00	27,784,000
Sauvignon Blanc	2010		915	7.217	6,604	Ton	842.00	5,560,000
	2009		983	6.025	5,923	Ton	920.00	5,449,000
White Wine (Other)	2010		1,750	4.562	7,984	Ton	1,109.00	8,854,000
	2009		1,763	4.933	8,697	Ton	1,212.00	10,541,000
Cabernet Sauvignon	2010		10,966	5.364	58,822	Ton	965.00	56,763,000
	2009		11,280	3.993	45,041	Ton	1,031.00	46,437,000
Merlot	2010		4,755	7.003	33,299	Ton	735.00	24,475,000
	2009		4,765	5.060	24,111	Ton	829.00	19,988,000
Pinot Noir	2010		1,994	1.825	3,640	Ton	2,474.00	9,005,000
	2009		1,905	2.299	4,380	Ton	2,714.00	11,887,000
Syrah	2010		3,462	3.959	13,706	Ton	977.00	13,391,000
	2009		3,525	2.986	10,526	Ton	1,188.00	12,504,000
Zinfandel	2010		2,869	3.800	10,902	Ton	1,064.00	11,600,000
	2009		2,883	3.812	10,990	Ton	1,106.00	12,155,000
Red Wine (Other)	2010		3,735	5.252	19,616	Ton	1,062.00	20,832,000
	2009		3,515	4.597	16,158	Ton	1,215.00	19,633,000
Lemons	2010	1,634	1,542	14.024	21,625	Ton	377.00	8,153,000
	2009	1,634	1,542	20.058	30,929	Ton	198.00	6,124,000
Strawberries (All)	2010		2,418		85,508	Ton		123,542,000
	2009		1,893		57,890	Ton		73,198,000
<i>Fresh</i>	2010			26.094	63,095	Ton	1,752.00	110,543,000
	2009			21.918	41,491	Ton	1,533.00	63,605,000
<i>Processed</i>	2010			9.269	22,412	Ton	580.00	12,999,000
	2009			8.663	16,399	Ton	585.00	9,593,000
Valencia Oranges	2010	295	295	25.860	7,629	Ton	177.00	1,350,000
	2009	304	304	6.015	1,829	Ton	261.00	477,000
English Walnuts	2010	2,371	2,330	0.488	1,137	Ton	2,259.00	2,569,000
	2009	2,371	2,330	0.330	769	Ton	1,796.00	1,381,000
* Miscellaneous	2010	2,912	2,290					20,716,000
	2009	2,788	1,946					14,698,000
TOTAL FRUIT & NUT CROPS	2010	48,265	47,021					\$365,750,000
	2009	48,173	46,034					\$271,474,000

* Almonds, Apples, Apricots, Asian Pears, Blueberries, Feijoas, Figs, Grapefruit, Kiwis, Limes, Mandarin Oranges, Navel Oranges, Nectarines, Olives, Passion Fruit, Peaches, Pears, Persimmons, Pistachios, Plum, Pluot, Pomegranates, Specialty Citrus, Table Grapes, Tangerines

VEGETABLE CROPS

CROP	YEAR	HARVESTED ACREAGE	PRODUCTION		UNIT	PER UNIT	TOTAL
			PER ACRE	TOTAL			
Bell Peppers	2010	849	763.0	647,787	30#	\$7.17	\$4,645,000
	2009	822	1,153.0	947,766	30#	\$7.59	\$7,194,000
Bok Choy	2010	298	1,260.0	375,480	80#	9.64	3,620,000
	2009	427	814.0	347,578	80#	8.87	3,083,000
Broccoli (All)	2010	13,351	526.0	7,022,626	23#	7.95	55,830,000
	2009	12,909	547.0	7,061,223	23#	8.52	60,162,000
Cabbage	2010	559	921.0	514,839	45#	7.81	4,021,000
	2009	653	1,341.0	875,673	45#	7.67	6,716,000
Cauliflower	2010	1,705	768.0	1,309,440	25#	7.08	9,271,000
	2009	1,533	831.0	1,273,923	25#	10.69	13,618,000
Celery	2010	845	1,232.0	1,041,040	60#	8.19	8,526,000
	2009	787	1,160.0	912,920	60#	8.93	8,152,000
Lettuce, Head	2010	3,592	608.0	2,183,936	50#	8.45	18,454,000
	2009	5,312	591.0	3,139,392	50#	8.83	27,721,000
Lettuce, Leaf	2010	1,002	840.0	841,680	25#	6.61	5,564,000
	2009	2,163	482.0	1,042,566	25#	11.81	12,313,000
Napa Cabbage	2010	1,230	956.0	1,175,880	80#	11.96	14,064,000
	2009	1,294	877.0	1,134,838	80#	9.61	10,906,000
Peas Edible Pod	2010	422	652.0	275,144	10#	8.11	2,231,000
	2009	361	245.0	88,445	10#	8.26	731,000
Spinach	2010	353	961.0	339,233	20#	7.23	2,453,000
	2009	834	463.0	386,142	20#	12.54	4,842,000
Squash	2010	233	891.0	207,603	30#	5.73	1,190,000
	2009	242	758.0	183,436	30#	7.37	1,352,000
* Miscellaneous	2010	6,564					46,797,000
	2009	4,589					30,519,000
TOTAL VEGETABLE CROPS	2010	31,003					\$176,666,000
	2009	31,926					\$187,309,000

* *Arugula, Anise, Artichokes, Asparagus, Beans, Beets, Brussel Sprouts, Carrots, Chard, Chili Peppers, Cilantro, Collards, Cucumbers, Daikon, Dandelion, Dill, Endive, Escarole, Fennel, Garlic, Green Garbanzo Beans, Herbs, Kale, Kohlrabi, Leeks, Melons, Mushrooms, Mizuna, Mustard, Onions, Parsley, Potatoes, Pumpkins, Radishes, Rutabagas, Sweet Corn, Turnips*

FIELD CROPS

CROP	YEAR	ACREAGE		PRODUCTION		UNIT	VALUE	
		PLANTED	HARVESTED	PER ACRE	TOTAL		PER UNIT	TOTAL
Alfalfa Hay	2010	2,216	2,216	5.72	12,676	Ton	\$140.00	\$1,775,000
	2009	2,001	2,001	5.89	11,786	Ton	\$132.00	\$1,556,000
Barley	2010	11,179	11,136	1.35	15,034	Ton	182.00	2,736,000
	2009	12,465	8,593	0.71	6,101	Ton	144.00	879,000
++ Grain Hay	2010	11,746	11,636	2.28	26,530	Ton	102.00	2,706,000
	2009	11,376	10,237	1.66	16,993	Ton	116.00	1,971,000
Grain Stubble (Grazed)	2010		6,038			Acre	17.00	103,000
	2009		10,098			Acre	11.00	111,000
Rangeland, Grazed	2010		1,025,000			Acre	9.00	9,225,000
	2009		1,025,000			Acre	9.00	9,225,000
* Miscellaneous	2010	5,342	6,252 **					2,000,000
	2009	2,688	3,313 **					1,436,000
TOTAL FIELD CROPS	2010	30,483	1,062,278					\$18,545,000
	2009	28,530	1,059,242					\$15,178,000

* Irrigated Pasture, Garbanzo Beans, Oats, Safflower, Sudan Grass, Wheat, Field Seed

++ Includes winter forage

** Harvested acres include irrigated pasture

From: San Luis Obispo County Agriculture Report 2010.

ANIMAL INDUSTRY

COMMODITY	YEAR	NUMBER OF HEAD	PRODUCTION	UNIT	PER UNIT	TOTAL
Cattle and Calves	2010	77,500	550,250	Cwt	\$97.00	\$53,374,000
	2009	82,500	565,125	Cwt	\$92.00	\$51,992,000
* Miscellaneous	2010					3,765,000
	2009 **					3,383,000
TOTAL ANIMAL INDUSTRY	2010					\$57,139,000
	2009					\$55,375,000
* <i>Aquaculture, Bees Wax, Eggs, Game Birds, Goats, Honey, Lambs, Sheep, Wool</i>						
** Revised						

From: San Luis Obispo County Agriculture Report 2010.

2010 Top Twenty Value Crops

Wine Grapes all	\$173,558,000
Strawberries	\$123,542,000
Broccoli	\$55,830,000
Cattle and Calves	\$53,374,000
Avocados	\$35,862,000
Vegetable Transplants	\$33,460,000
Cut Flowers	\$23,313,000
Indoor Decoratives	\$23,289,000
Head lettuce	\$18,454,000
Napa Cabbage	\$14,064,000
Cauliflower	\$9,271,000
Rangeland grazed	\$9,225,000
Celery	\$8,526,000
Lemons	\$8,153,000
Outdoor Ornamentals	\$8,152,000
Leaf Lettuce	\$5,564,000
Bell peppers	\$4,645,000
Cabbage	\$4,021,000
Bedding Plants, Sod & Ground Cover	\$3,827,000
Bok Choy	\$3,620,000

From: San Luis Obispo County Agriculture Report 2010.

COMPARISON OF VALUATION OF MAJOR GROUPS DURING THE PAST TEN YEARS

YEAR	ANIMAL	FIELD	NURSERY	FRUIT & NUT	VEGETABLE	TOTAL
2001	46,517,000	17,025,000	90,908,000	182,415,000	152,531,000	489,396,000
2002	46,161,000	15,595,000	97,377,000	167,555,000	156,687,000	483,375,000
2003	49,181,000	15,161,500	91,476,000	189,144,000	168,423,000	513,385,500
2004	59,620,000	15,342,100	101,156,000	195,712,000	167,606,000	539,436,100
2005	58,380,000	18,055,000	100,697,000	243,604,000	172,896,000	593,632,000
2006	64,244,000	17,477,000	108,066,000	236,491,000	204,336,000	630,614,000
2007	60,078,000	15,462,000	107,674,000	235,135,000	219,746,000	638,095,000
2008	53,848,000	17,790,000	101,845,000	229,661,000	199,778,000	602,922,000
2009	55,375,000	15,178,000	93,759,000	271,474,000	187,309,000	623,095,000
2010	57,139,000	18,545,000	94,708,000	365,750,000	176,666,000	712,808,000

From: San Luis Obispo County Agriculture Report 2010.

Community Gardens

Info Collected March-May/2011

Sources noted in each section

General Resource:

American Community Gardening Association

1777 East Broad Street

Columbus, OH 43203

Toll-free: [877-275-2242](tel:877-275-2242)

www.communitygarden.org

(Only City of SLO Community Gardens are listed on the national database)

Arroyo Grande:

Alison Neff, Secretary to the Director of Dept of Recreation and Maintenance Services 473-5474

Currently one existing community garden, located at 1221 Ash, between Elm Street Park and the Soto sports complex. 16 plots, 15' x 15', all fully rented with a waiting list of 12. Rent is \$18 for 6 months. A local Boy Scout is working on his Eagle Scout project to expand the existing garden area on a small adjacent piece of land. The City would be interested in developing another garden at a different location were land available.

Atascadero:

Brady Cherry, Director of community Services

470-3406

Tried several times to establish community gardens. There is low demand due to large lot size and size of the city (25 square miles.) There currently are no city run community gardens but there is one church sponsored garden.

Grover Beach:

473-4580

<http://www.grover.org>

1. The City sponsored garden is located at 920 Brighton Avenue. Plots 10'x 20' and rent for \$30 for 6 months. There is a waiting list of 6. The location is right off of Grand Avenue, central to Grover Beach. City tried to get approval to sell the site but was unanimously denied. This action caused the Tribune to write an editorial encouraging more community gardens (June 12, 2011.)

2. Exploration Station also has a community garden project underway.

473-1421 Contact: Deborah

<http://www.explorationstation.org>

This new community garden is scheduled to open May 21st. It has been built with the support and assistance of the local Rotary Club. It will have 14 plots, 12' x 20' each. The rent will probably be \$10 per month with a 6 month minimum. There will be garden guidelines and some sweat equity will be required of each

tenant to maintain the common areas and ensure full use of the garden. It is already fully subscribed with gardeners from the City's Brighton Ave. garden. Exploration Station will retain one plot as a demo and teaching garden. There is one wheelchair accessible plot and the garden will include picnic benches for the public at large. Exploration Station is planning some educational programs for the garden.

Morro Bay:

1. Estero Community Garden, 3000 block of Ironwood, Morro Bay. Began effort in 2003, gardening began 10 months later. 42 plots, 30 of which are 10x20 (\$60 per year) and 10 of which are 15x15 (\$65 per year). The garden is located on private property owned by the Estero Bay Methodist Church and they do have a waiting list. The garden was funded by an initial donation of \$200 for irrigation. They have an annual fundraiser and fees fund operation of the garden.

Johannah Varland

772-9580

jvarland@calpoly.edu

2) Baywood Community Garden is located at 674 El Morro, Baywood Park. It has just been built and consists of 42 plots and 2 greenhouses. The garden includes an experimental area of 25 varieties of tomatoes, 25 fruit trees, a flower and shade garden, and they plan to add a succulent garden. The garden is fully subscribed and they have a waiting list. The land was provided by a nearby inn who leased the land, refurbished a structure on site and allow the gardeners to use the rest. They also provided some money for start up expenses. The first Sunday of each month the garden has a picnic and food swap.

Bill Lee

(805) 234-0463

3) Sea Pines Community Garden

Rebecca Russell Rebecca.mitra@yahoo.com (805) 215-4477

Jerris Greenblat jerrisgreenblat@me.com

As of 6/30 Rebecca reports that there is a 15 member garden group in search of a site. They had been in negotiations with a private landowner for space but the owner has backed out.

Paso Robles:

Charles Lorenzen

237-3864

1) Paso Robles Demonstration Garden, 600 Niblick Road, Paso Robles

This project was conceived and implemented by the Transitions Town group of Paso Robles. It is a demonstration garden rather than a traditional community garden in that it does not consist of plots to be gardened by multiple individuals

but, rather, a project to convert 3500 square feet of grass at Centennial Park to garden that conserves water and provides food. Contact: Terri Knowlton
www.pasoroblesdemogarden.org

2) The City does not currently have any plans for community gardens specifically, although the Uptown/Town Centre Specific Plan does not preclude them and would be a logical location. A community group would need to make a proposal and run it through the Planning Commission. Nick Gilman is the City Council member assigned to Parks.

Pismo Beach:

Mickey Davenport, Parks and Halls
773-7039

No City sponsored community gardens and the Planning Dept was unaware of any non-City sponsored gardens.

San Luis Obispo:

<http://www.slocity.org/parksandrecreation/commgarden.asp>

The City of San Luis Obispo has four community gardens sites with over 100 plots available for City residents to lease.

Broad Street

The Broad Street Garden has 17 plots and is located on the North end of Broad Street, between Lincoln Street and the Highway 101 southbound on-ramp.

Laurel Lane

The Laurel Lane Garden site has 16 plots and is located next to Fire Station #3 near Augusta Street intersection.

Emerson Park

The Emerson Park Garden has 38 plots and is located on the corner of Nipomo and Pismo Streets, next to the Parks and Recreation Department.

Rotary Garden at Meadow Park

The Rotary Garden contains 40 plots. It is located at the west end of Meadow Park with the nearest access on South Street. More information and photos coming soon!

Prospective Gardeners

The City of San Luis Obispo community garden plots are available to City residents on a first-come, first-served basis. The annual fee is a \$24 base rate plus a \$.03 assessment charge per square foot. All garden sites currently have waiting lists.

To be added to the waiting list please contact [Amy Voorhies](#), Community Services Specialist, at 781-7069.

County of San Luis Obispo:

(1) UC Cooperative Extension Demonstration Garden
2156 Sierra Way, San Luis Obispo
Amy Breschini (805) 781-5946

This is not a traditional community garden but rather an educational demonstration garden initiated in 2008 as part of the USDA Know Your Farmer, Know Your Food Initiative. It is intended to model the type of home gardening one could accomplish in a typical urban yard and is staffed by UCCE Master Gardeners and some volunteers. It encounters the same issues as any urban garden/farm: parking, liability for those who work there, ADA compliance. It is considered a temporary garden as it is built on land owned by the County, but intended for the expansion of French Hospital.

(2) Duveneck Park, Templeton
Curtis Black, Deputy Director, County Parks and Recreation
805) 781-5204
cblack@co.slo.ca.us

This 81-acre site is zoned agricultural and has frontage on the Salinas River. It was donated to the County for passive recreational use but due to budgetary limitations, no definitive plans have been developed and the land remains in its original state. In 2011, Cal Poly Landscape Architecture students, under the guidance of Professor Louise Schiller (CCAN Board President) did a site analysis of the site and most student visions dedicated a portion of the site to active agricultural activities (community garden or demonstration farm) with an educational component. Designs are available for viewing by contacting Deputy Director Black.

One Cool Earth

www.onecoolearth.org

One Cool Earth is devoted to planting as a means of creating a sustainable planet. The organization runs a local "Garden Matchmaking" program that connects gardeners who seek land with private landowners who have land suitable for gardening.

School Gardens

Source: Teresa Lees, Environmental Education Coordinator, County Office of Education

Last Updated: Feb 2011

School Name	Phone	Garden	Contact Name and Role
Atascadero USD			
Atascadero Jr High	805-462-4360	n	
Atascadero High	805-462-4300	n	Rhian Gulassa Teacher Angie McQuitty, Annie Turner
Carrisa Plains Elementary	805-475-2244	y	Terri Hillier - Teacher
Creston Elementary	805-238-4771	y	Lorraine Jenson
Del Rio Continuation	805-462-4350		
Fine Arts Academy	805-460-2521	y	Thomas Smith - Teacher
Monterey Road Elementary	805-462-4270	y	Diane Shervem - Teacher Jan McKee (?)
San Benito Elementary	805-462-4330	y	Yvette Nowak - Teacher
San Gabriel Elementary	805-462-4340	y	Trish Cooley - Teacher, Carolyn Balogh - Teacher, Cinthia Franklin, Tammy Jacino
Santa Margarita	805-438-5633	y	Judy Lilley - School Secretary Lory Griffith
Santa Rosa Academic	805-462-4290	y	Chris Allen - Principal, Kevin Lambert-PTA
West Mall Alternative			
Cayucos ESD			
Cayucos Elementary	995-3694	y	Lisa Schinn - Teacher and Candie Whitsett
Coast Unified			
Cambria Community Day	805-927-7148		
Cambria Grammar School	805-927-4400	y	Joe Sassaman - Teacher, Shirl Ellis - Volunteer
Coast Union High	805-927-3889	n	Cyndie Wilson - Vo Ag
Leffingwell Continuation	805-927-7148	y	Grant Phillips - Teacher
Santa Lucia Middle School	805-927-3693	n	
Lucia Mar			
Arroyo Grande High	(805) 474-3200	?	Sara Bandy (?)
Branch Elementary	805-474-3720	y	Kathy Beacock - Teacher
Dana Elementary	805.474.3790	y	Karen Brockway, Teacher Jane Peterson - 6th Dore Foreman
Dorothea Lange Elementary	(805)474-3670		
	805.474.3740	y	Lara Storm-Principal
Grover Beach Elementary	(805)474-3770	n	
Grover Heights Elementary	(805)474-3700	y	Rebecca Britton - Teacher
Harloe Elementary	(805)474-3710	y	
Judkins Middle	805-474-3600	n	
Lopez Continuation HS	474-3750	?	
Mesa Middle School	805 474-3400	y	Helen Jackson - Teacher
Nipomo Elementary	(805)474-3780	y	Diana Dolden - Teacher
Nipomo High School	805-474-3300	y	Shannon McNeil - Teacher
Ocean View Elementary	(805)474-3730	y	Rena Spooner - Teacher Gail Luske (?)
Oceano Elementary	805-474-3800	y	Connie Kessler - Teacher
Paulding Middle School	805 474-3500	y	Eric Dunham - Teacher
Shell Beach Elementary	805.474.3760	y	Patience Simpson - Teacher
Paso Robles JUSD			

Bauer/Speck Elementary			Judy Honerkamp - Teacher / Garden Coordinator
Georgia Brown Elementary	(805)237-3387	y	Diana Makowetski - Teacher / Garden Coordinator
Pat Butler Elementary	(805)-237-3407	n	
Culinary Arts Academy	805.237.3346	?	
Flamson Middle School	805.237.3350	n	
Kermit King Elementary	805-237-6169	n	
Lewis Middle School	805.237.3450	y	Debby McPherson - Teacher
Liberty Continuation HS	805.237.3332	y	John Semenick - Teacher
Paso Robles HS	805-237-3333	?	
Paso Robles Indpt Study	805-237-3368 EXT 247	n	
Virginia Peterson Elem	805-237-3401	y	Nancy Andrus - PTA
Phillips/Freedom Comm	805.237.3482	y	Dean Sharon - Dean of School
Winifred Pifer Elem	(805) 237-3393	n	Michelle Joy (?) Deb Baca(?) Jennifer Bell (/)
Pleasant Valley JUESD			
Pleasant Valley Elementary	(805) 467-3453	y	Lisa Bushong - Teacher Dorothy Green (?)
San Luis Coastal USD			
Baywood Elementary	805-534-2856	y	Megan August-Evans - Parent, Sue Sanders (?)
Bellevue-Santa Fe Charter School	(805)595-7169	y	Jim Fickes - Garden Coordinator / Parent Rebecca Wallstrum Brian Getz-Principal
Bishop's Peak/Teach Elementary	805-596-4030	y	Mavis Wong - Garden Coordinator / Parent Grace Washer-Teacher Denise Jenkins-Teacher
C.L. Smith Elementary	805-596-4094	y	Greg Kraemer - Teacher and Sandee Sack - Teacher Sandy Green
Del Mar Elementary	805-771-1858	y	Ms.Modeana Lamphier - Teacher Janis Brown-Teacher
Hawthorne Elementary	805-596-4070	y	Kirt Collins - Principal, Ginny Carr - Teacher
Laguna Middle School	805-596-4055	y	Debbie Jones (?)
Los Osos Middle School	805-534-2835	y	Dan Hoskins - Teacher Anne Marie Stoneman(?) Leslie Thompson-Teaacher
Los Ranchos Elementary	805-596-4075	y	Marty Warde - Teacher Carrie Lane (?)
Monarch Grove Elementary	805-534-2844	y	Pam Alford - Teacher, Judy Neuhauser - Teacher, Jennifer Codron - Parent and Lori Olson - Parent
Morro Bay HS	805-771-1845	y	Faylla Chapman - Teacher
Pacheco Elementary	805-596-4081	y	R. Mayfield - Principal and Shoshannah Galambos - Parent, Evan Chechopolous Aby Diodati (?)
Pacific Beach Continuation School	805-596-4023	?	
San Luis Adult Ed	805-549-1222	y	G Halfman, Director of School
San Luis Obispo Chilrens Development Center	805 - 544-0801	y	Joanne Berber
San Luis Obispo High	596-4040	?	Erin Thompson - Teacher(?) now at Templeton HS (?) Lisa Burson
Sinsheimer Elementary	805-596-4088	y	Michelle Headrick - Garden Coordinator / Parent
San Miguel JUSD			

Cappy Culver School			
Lillian Larsen Elementary	(805) 467-3216	y	Christina Wilkinson - Ag Teacher
San Miguel Community Day	(805) 467-3216	?	
Shandon JUSD			
Parkfield Elementary	805-463-2331	?	
Shandon Community Day			
Shandon Elementary	805-238-1782	y	Victoria Goodwin - Teacher
Shandon Middle School			
Shandon High School	805-238-0286	y	Deanna Cargill - Teacher
Templeton USD			
Eagle Canyon High	805-434-5875	n	
Templeton Elementary	805-434-5820	y	Krissy Lorz - Teacher Neal Mandich(?)
Templeton Middle	805.434.5813	y	Randy Gray - Teacher
Templeton High School	805-434-5888	y	Mr.Hildabrand-Ag. Teacher(?) or Erin Thompson (?)
Vineyard Elem	805-434-5840	y	Mr. Shallenberger - Principal
Community Schools			
Chalk Mountain Comm		y	Paige Leebrick - Teacher
Loma Vista Comm		y	Paige Leebrick - Teacher
Mesa View Comm		y	Paige Leebrick - Teacher
San Luis Obsipo Comm		y	Paige Leebrick - Teacher
PreSchools			
State Pre Schools			
Parent Participation - MB		y	Angela Nelson (?)
Parent Participation - SLO		y	Jayne Devencenzi - Adult School/Special Ed
CAPSLO - multiple sites		y	Shayna Paulson
Laugh & Learn Preschool			Julie Soto
Salinas Adult Ed Pre School			
Homeschools/ Private Schools			
San Luis Classical Academy	(805) 548-8700	y	Merideth Eades - Teacher Sarah Ritter & Angela Nelson
Montessori Children's School	805.544.6691	y	Carolyn Eicher - Parent, Kit Rowland, Judilyn Duba
Laureate School	805.544.2141	y	Heather Noyes - Teacher
St. Patrick's			Melissa Angel
Santa Lucia			Michelle Madgett, Jan Thompquist - Director

SLO Fisheries

Data collected: May, 2011

1. Fish Hatcheries: none listed in SLO, Monterey, or Santa Barbara County. 1 trout fish hatchery in Ventura County: Fillmore Hatchery.
<http://www.dfg.ca.gov/regions/4>
2. Fish and Seafood Wholesale
San Luis Obispo County AT&T phone book October 2010
 - a. Abalone Farm, Cayucos (805) 995-2495
 - b. California Seafood Corp (805) 489-6851
 - c. Central Coast Seafood, Atascadero (805) 462-3474
 - d. Central Coast Sportfishing, Morro Bay (805) 772-3474
 - e. Morro Bay Fish Company, Morro Bay (805) 772-3100
 - f. Olde Port Fisheries, Avila Beach (805) 541-3474 or 595-9456
3. Fish and Seafood Brokers:
San Luis Obispo County AT&T phone book October 2010
 - a. Bay Shore Seafood, Morro Bay (805) 225-1162

SECTION 2: DISTRIBUTE

Food Cooperatives

SLO County Wholesalers and Distributors

2009 SLO County Warehousing and Storage

Food Cooperatives

Data Collected May, 2011

An agricultural cooperative, also known as a farmers' co-op, is usually a purchasing or producer co-op, and sometimes a combination of the two. Farmer cooperatives handle process and market almost every type of agricultural commodity, furnish farm supplies, and provide credit and related financial services. Earnings from these activities are returned to their farmer members on a patronage basis, helping improve their income from the marketplace.

Source: <http://www.ncba.coop>

However, in fact, there are at least two seller coops in SLO County:

Pismo-Oceano Vegetable Exchange

<http://pove.net>

Sales: (805) 489-5770

Shipping: (805) 489-6517

Accounting: (805) 473-4930

Central Coast Agricultural Cooperative

<http://coastgrown.com>

mobile harvest unit

on-line ordering system inactive at this time

There is also one buyers Coop:

Natural Foods Coop of San Luis Obispo

745 Francis St.

San Luis Obispo, California 93401

And one in development at Cal Poly through the Real Food Collaborative:

Tessa Salzman tessajsalzman@gmail.com

Diana Gustafson degustaf@calpoly.edu

<http://realfoodcalpoly.com/>

Food Wholesalers and Distributors

Source: AT&T Yellow Pages Oct 2010

Fruit & Vegetable Brokers

Aplo Inc
(805) 343-2835

CB Sales
1141 Tama Lane
Santa Maria
(805) 614-4994

Combs Distribution
2400 West Main St
Santa Maria
(805) 346-2455

For Ever Green Valley Farm
Santa Maria
(805) 928-7512

G W Palmer Company, Inc
710 Dolliver
Pismo Beach
(805) 773-1799

LDV Marketing Inc
2365 South Westgate Road
Santa Maria
(805) 739-1688

Reiter Affiliated Company
1414 South Miller St
Santa Maria
(805) 922-9209

Rhyne Glen R Company
1521 Fairway Drive
Paso Robles
(805) 239-0685

Sun Berry Sales
1141 Tama Lane
Santa Maria
(805) 346-8136

Tacken O'Conner Development
668 Marsh Street
San Luis Obispo
(805) 543-5700

The Turner Co
4940 Huasna Townsite Road
Arroyo Grande
(805) 489-8000

Thelen & Taylor Produce
1860 Highway 1
Oceano
(805) 904-6660

Fruit & Vegetable Grower Shippers

Avant'Garde
385 N. Blosser Road
Santa Maria
(805) 347-4477

Betteravia Farms
3223 West Main Street
Santa Maria
(805) 922-2630

Boni-Fresh Ready Cut Vegetables, LLC
123 N. Russell Ave
Santa Maria
(805) 922-2104

Bonita Packing Company
1850 West Stowell Road
Santa Maria
(805) 347-7733, (805) 925-2478

Central West Produce
511 East Main Street
Santa Maria
(805) 925-2481

Corona Marketing
1106 South Broadway
Santa Maria
(805) 346-2114

Driscoll Strawberry
(805) 925-5770

Fortune Growers
(805) 481-1055

Ikeda Brothers
145 So Halcyon Road
Arroyo Grande
(805) 489-2526

Liberty Cooler
2311 Westgate Road
Santa Maria
(805) 346-2656

Liberty Strawberry Sales
(805) 928-5771

Main Street Produce Inc.
2165 West Main
Santa Maria
(805) 349-7170

Mid-Coast Cooling
1750 East Betteravia
Santa Maria
(805) 349-2445

MJA Cooling
1370 White Court
Santa Maria
(805) 928-5544

Pacific Coast Produce
1284 West Main
Santa Maria
(805) 925-1253

Phelan Taylor Produce
1860 Front
Oceano
(805) 489-2413

Regatta Tropicals
359 Front
Grover Beach
(805) 473-1320
(805) 270-1001

Reliable Produce Sourcing
2301 Bonita Lateral Road
Santa Maria
(805) 310-5575

Spring Harvest Berry Farms
1470 East Stowell Rd
Santa Maria
(805) 922-7397

Strong Heart Growers
1096 Bonita School Road
Santa Maria
(805) 347-1394

Swift Sky House
3698 Clark Valley Road
Los Osos
(805) 528-2828

Talley Farms
2900 Lopex Drive
Arroyo Grande
(805) 489-4964

Tomahawk Produce
(805) 773-1021

Fruit & Vegetables Wholesale

C&R Produce
365 Mehlschau Road
Nipomo
(805) 929-0330

Hayashi Produce Company
2460 Gracia Way
Arroyo Grande
(805) 481-7878

Hayashi Y & Sons
(805) 489-2595

Ikeda Brothers
2625 Branch Mill Road
Arroyo Grande
(805) 489-2564

Jordano's Foodservice
550 South Patterson Ave
Santa Barbara
(805) 964-0626

Manzanita Berry Farms
1850 West Stowell
Santa Maria
(805) 346-1515

Martine's Fruits and Vegetables
11549 Los Osos Valley Road
San Luis Obispo
(805) 549-8008

Phelan Taylor Produce
(805) 489-4211

Produce Available
415 South Russell
Santa Maria
(805) 925-4253

Slo Grown Produce
1140 Carpenter Canyon Road
Arroyo Grande
(805) 481-1040

Spring Valley Produce Inc
1303 East Grand Ave
Arroyo Grande
(805) 474-8434

Frozen Food Processors

Sure-Fresh Produce Inc
1302 West Stowell Road
Santa Maria
(805) 349-2677

Meat Cutting

Arroyo Grande Meat Co
118 East Branch
Arroyo Grande
(805) 489-2693

Specialty Meats Co,
640 Exline
Paso Robles
(805) 226-9046

Meat Packers

Creston Valley Meats
730 15th Street
Paso Robles
(805) 227-6200

Meat Processing

J&R Meats
1124 Black Oak
Paso Robles,
(805) 237-8100

Meat Wholesale

Pro-Zyme International
(805) 461-1761

2009 County Business Patterns (NAICS)

San Luis Obispo County, CA

Warehousing: General

Source: www.census.gov/econ/cbp

			Number of establishments by employment-size class								
NAICS code	NAICS code description	Total establishments	1-4	5-9	10-19	20-49	50-99	100-249	250-499	500-999	1000 or more
493	Warehousing and storage	8	6	0	1	0	1	0	0	0	0

SECTION 3: PROCESS

2009 SLO County Manufacturers of Food and Beverages

2011 SLO County Environmental Health Department Listing of
Commissaries for Public Use

CA Department of Public Health List of SLO County Businesses
with Valid Processed Food Registration

2009 County Business Patterns (NAICS)

San Luis Obispo County, CA
 Manufacturing: Food and Beverage
 Source: www.census.gov/econ/cbp

NAICS code	NAICS code description	Total establishments	Number of establishments by employment-size class								
			1-4	5-9	10-19	20-49	50-99	100-249	250-499	500-999	1000 or more
311	Food manufacturing	29	9	7	8	4	1	0	0	0	0
3111	Animal food manufacturing	1	0	1	0	0	0	0	0	0	0
31111	Animal food manufacturing	1	0	1	0	0	0	0	0	0	0
311119	Other animal food manufacturing	1	0	1	0	0	0	0	0	0	0
3113	Sugar and confectionery product manufacturing	7	3	2	1	1	0	0	0	0	0
31133	Confectionery manufacturing from purchased chocolate	7	3	2	1	1	0	0	0	0	0
311330	Confectionery manufacturing from purchased chocolate	7	3	2	1	1	0	0	0	0	0
3114	Fruit and vegetable preserving and specialty food manufacturing	1	0	0	0	1	0	0	0	0	0
31142	Fruit and vegetable canning, pickling, and drying	1	0	0	0	1	0	0	0	0	0
311421	Fruit and vegetable canning	1	0	0	0	1	0	0	0	0	0
3115	Dairy product manufacturing	2	0	0	1	1	0	0	0	0	0
31152	Ice cream and frozen dessert manufacturing	2	0	0	1	1	0	0	0	0	0
311520	Ice cream and frozen dessert manufacturing	2	0	0	1	1	0	0	0	0	0
3116	Animal slaughtering and processing	1	0	0	0	1	0	0	0	0	0
31161	Animal slaughtering and processing	1	0	0	0	1	0	0	0	0	0

311612	Meat processed from carcasses	1	0	0	0	1	0	0	0	0	0
3118	Bakeries and tortilla manufacturing	12	5	2	5	0	0	0	0	0	0
31181	Bread and bakery product manufacturing	12	5	2	5	0	0	0	0	0	0
311811	Retail bakeries	8	3	2	3	0	0	0	0	0	0
311812	Commercial bakeries	4	2	0	2	0	0	0	0	0	0
3119	Other food manufacturing	5	1	2	1	0	1	0	0	0	0
31191	Snack food manufacturing	2	0	1	1	0	0	0	0	0	0
311919	Other snack food manufacturing	2	0	1	1	0	0	0	0	0	0
31194	Seasoning and dressing manufacturing	3	1	1	0	0	1	0	0	0	0
311941	Mayonnaise, dressing, and other prepared sauce manufacturing	1	1	0	0	0	0	0	0	0	0
311942	Spice and extract manufacturing	2	0	1	0	0	1	0	0	0	0
312	Beverage and tobacco product manufacturing	74	33	11	11	15	3	1	0	0	0
3121	Beverage manufacturing	74	33	11	11	15	3	1	0	0	0
31211	Soft drink and ice manufacturing	2	2	0	0	0	0	0	0	0	0
312112	Bottled water manufacturing	1	1	0	0	0	0	0	0	0	0
312113	Ice manufacturing	1	1	0	0	0	0	0	0	0	0
31212	Breweries	1	0	0	0	1	0	0	0	0	0
312120	Breweries	1	0	0	0	1	0	0	0	0	0
31213	Wineries	71	31	11	11	14	3	1	0	0	0
312130	Wineries	71	31	11	11	14	3	1	0	0	0

2009 County Business Patterns (NAICS)

San Luis Obispo County, CA

Wholesale Trade: Food and Beverage

Source: www.census.gov/econ/cbp

NAICS code	NAICS code description	Number of establishments by employment-size class									
		Total establishments	1-4	5-9	10-19	20-49	50-99	100-249	250-499	500-999	1000 or more
4244	Grocery and related product merchant wholesalers	39	21	8	3	5	2	0	0	0	0
42442	Packaged frozen food merchant wholesalers	4	2	0	0	1	1	0	0	0	0
424420	Packaged frozen food merchant wholesalers	4	2	0	0	1	1	0	0	0	0
42443	Dairy product (except dried or canned) merchant wholesalers	3	2	1	0	0	0	0	0	0	0
424430	Dairy product (except dried or canned) merchant wholesalers	3	2	1	0	0	0	0	0	0	0
42444	Poultry and poultry product merchant wholesalers	1	0	1	0	0	0	0	0	0	0
424440	Poultry and poultry product merchant wholesalers	1	0	1	0	0	0	0	0	0	0
42445	Confectionery merchant wholesalers	2	2	0	0	0	0	0	0	0	0
424450	Confectionery merchant wholesalers	2	2	0	0	0	0	0	0	0	0
42446	Fish and seafood merchant wholesalers	1	0	0	0	1	0	0	0	0	0
424460	Fish and seafood merchant wholesalers	1	0	0	0	1	0	0	0	0	0
42448	Fresh fruit and vegetable merchant wholesalers	13	9	2	0	1	1	0	0	0	0

424480	Fresh fruit and vegetable merchant wholesalers	13	9	2	0	1	1	0	0	0	0
42449	Other grocery and related products merchant wholesalers	15	6	4	3	2	0	0	0	0	0
424490	Other grocery and related products merchant wholesalers	15	6	4	3	2	0	0	0	0	0
4245	Farm product raw material merchant wholesalers	2	1	0	0	1	0	0	0	0	0
42451	Grain and field bean merchant wholesalers	1	0	0	0	1	0	0	0	0	0
424510	Grain and field bean merchant wholesalers	1	0	0	0	1	0	0	0	0	0
42459	Other farm product raw material merchant wholesalers	1	1	0	0	0	0	0	0	0	0
424590	Other farm product raw material merchant wholesalers	1	1	0	0	0	0	0	0	0	0

Commissary Listing for Public Use

last updated 6/3/2011

The following facilities will be evaluated for approval on a case by case basis. Once it has been determined that they have met the capacity for number of facilities able to use the facility as a commissary, no further facilities will be approved to use the commissary.

		City	Phone	Owner/Contact
ATASCADERO LAKE PAVILLON	9315 PISMO AVE	ATASCADERO	(805) 461-5005	CITY OF ATASCADERO
ATASCADERO TEMPLE ASSOCIATION	2607 TRAFFIC WY	ATASCADERO	(805) 466-0668	ATASCADERO TEMPLE ASSOCIATION
WITH THE GRAIN	8550 EL CAMINO REAL #C	ATASCADERO	(805) 462-9529	DEROSIER, JOHN
PETE'S PIERSIDE CAFE	PIER 3 POD 3	AVILA BEACH	(805) 235-6187	COURTNEY CARDEN
JOSLYN ADULT RECREATION CENTER	950 MAIN ST	CAMBRIA	(805) 927-3364	JOSLYN ADULT RECREATION CENTER
LAS CAMBRITAS RESTAURANT	2336 MAIN ST. #B	CAMBRIA	(805) 927-0175	RICK WEMPLE rick@lascambritas.com
OLD CREEK RANCH	12520 SANTA RITA RD	CAYUCOS	(805) 995-1164	BLANCHARD, ROBERT C
GROVER BEACH 76	684 W. GRAND AVE.	GROVER BEACH	(805) 489-7275	STEVE ELSAYED
PHIL'S CATERING COMMISSARY	967 HUBER ST	GROVER BEACH	(805) 489-3869	VIERRA, GARY
BACK BAY CAFÉ	1399 2ND ST.	LOS OSOS	(805) 234-0463	BILL LEE blee@lee-associates.com
MORRO BAY COMMUNITY CENTER	1001 KENNEDY WAY	MORRO BAY	(805) 772-6278	CITY OF MORRO BAY
MORRO BAY VETERAN'S BLDG	209 SURF ST	MORRO BAY	(805) 772-6280	CITY OF MORRO BAY
ROSIE'S RESTAURANT	146 N. THOMPSON	NIPOMO	(805) 929-0600	ROSIE LARSON rosielarson@aol.com
SUBWAY	536 W. TEFFT ST.	NIPOMO	(805) 709-1521	DARYL CARDILLO nipomosubway@sbcglobal.net
CIDER CREEK BAKERY	205 OAK HILL RD.	PASO ROBLES	(805) 238-4144	KEN
DINING WITH ANDRE	1032 PINE ST.	PASO ROBLES	(805) 286-6635	CRISTINA AVERSENS crespou@aol.com
GREGORS	611 SPRING ST.	PASO ROBLES	(805) 239-1917	JERRY
NINER WINE ESTATES	2400 HWY 46 WEST	PASO ROBLES	(805) 239-4870	TOM BOWER tomjbower@aol.com
COCO'S RESTAURANT	411 FIVE CITIES DR.	PISMO BEACH	(805) 710-2417	LARRY PUDER larry@drumstoyou.com
BUDGET CAFÉ	3121 S. HIGUERA ST. #J	SAN LUIS OBISPO	(805) 543-5024	RHONDA MEYEDA rmayeda@charter.net
BURRITO WAGON COMMISSARY	285 PRADO RD #C	SAN LUIS OBISPO	(805) 545-0762	FLORES, VICTOR
KENNEDY CLUBHOUSE	3889 LONG ST	SAN LUIS OBISPO	(805) 781-3488	KENNEDY CLUB FITNESS
LINNAEA'S CAFE (COMMISSARY)	3468 SACRAMENTO	SAN LUIS OBISPO	(805) 543-6867	ORME, MARIANNE
PASO ALMONDS	3121 S HIGUERA ST C	SAN LUIS OBISPO	(805) 544-7499	HALL, RUSSELL H
PHOENIX FINE CATERING	265 PRADO RD STE 3	SAN LUIS OBISPO	(805) 772-1774	PARADISE FOUND RESTAURANTS INC
SAN LUIS OBISPO BOTANICAL GARDENS	3450 DAIRY CREEK RD	SAN LUIS OBISPO	(805) 541-1400	FRIENDS OF BOTANICAL GARDENS
SLO CONDIMENT CO/ FIERO CAFE	709 FIERO LN	SAN LUIS OBISPO	(805) 781-4147	TALMAGE, SCOTT
TWO COOKS CATERING	3563 SUELDO #H	SAN LUIS OBISPO	(805) 710-2883	THOMAS, RUSSELL
CAHOOTS CATERING COMPANY	1945 ESTRELLA CIR	SAN MIGUEL	(805) 467-9322	SUBJECT, JAMES/ JONES, ELIZ

California Department of Public Health - Food and Drug Branch
Firms in San Luis Obispo County with a Valid Processed Food Registration

FirmName	Addrline	City	Zipcode	Commodity_Code	Commodity_Name
Taco Works, Inc.	3424 Sacramento Dr.	San Luis Obispo	93401	103	Corn Chips
Kathleen Dagnall	3440 Roberto Ct. #4	San Luis Obispo	93401	459	Other Multiple Foods
Kathleen Dagnall	3440 Roberto Ct. #4	San Luis Obispo	93401	475	Sandwich Manufacturer
Payo Laboratories	680 Farroll Rd.	Grover Beach	93433	129	Other Prepared Mixes
RR LOCHHEAD MANUFACTURING COMPANY	200 SHERWOOD RD.	PASO ROBLES	93446	251	Extracts
RR LOCHHEAD MANUFACTURING COMPANY	200 SHERWOOD RD.	PASO ROBLES	93446	250	Extracts & Flavors
ABALONE FARM, INC.	5010 CABRILLO HIGHWAY	CAYUCOS	93430	222	Frozen Shellfish & Crustaceans
CENTRAL COAST SEAFOOD	5495 TRAFFIC WY.	ATASCADERO	93422	210	Fish & Fish Products
CENTRAL COAST SEAFOOD	5495 TRAFFIC WY.	ATASCADERO	93422	220	Shellfish, Crustaceans & Other Aquatic Animals
CENTRAL COAST SEAFOOD	5495 TRAFFIC WY.	ATASCADERO	93422	230	Smoked Fish, Shellfish & Crustaceans
CENTRAL COAST SEAFOOD	5495 TRAFFIC WY.	ATASCADERO	93422	240	Spices & Salt
CENTRAL COAST SEAFOOD	5495 TRAFFIC WY.	ATASCADERO	93422	351	Fresh Meats
CENTRAL COAST SEAFOOD	5495 TRAFFIC WY.	ATASCADERO	93422	355	Frozen Meats & Poultry
CENTRAL COAST SEAFOOD	5495 TRAFFIC WY.	ATASCADERO	93422	454	Canned Soups
CENTRAL COAST SEAFOOD	5495 TRAFFIC WY.	ATASCADERO	93422	221	Fresh Shellfish & Crustaceans
CENTRAL COAST SEAFOOD	5495 TRAFFIC WY.	ATASCADERO	93422	222	Frozen Shellfish & Crustaceans
CENTRAL COAST SEAFOOD	5495 TRAFFIC WY.	ATASCADERO	93422	172	Fluid Milk Products
S.S. LOLLIPOP	966 GRIFFIN / 930 HUBER ST.	GROVER BEACH	93433	131	Candy & Confectionary Products
S.S. LOLLIPOP	966 GRIFFIN / 930 HUBER ST.	GROVER BEACH	93433	132	Chocolate & Cocoa Products
Linn's Fruit Bin, Inc.	2515 Village Lane Ste. #E	Cambria	93428	54	Frozen Sweet Goods
Linn's Fruit Bin, Inc.	2515 Village Lane Ste. #E	Cambria	93428	65	Frozen Pies
Linn's Fruit Bin, Inc.	2515 Village Lane Ste. #E	Cambria	93428	66	Frozen Pastries
Linn's Fruit Bin, Inc.	2515 Village Lane Ste. #E	Cambria	93428	310	Jams, Jellies, Preserves & Butters
Linn's Fruit Bin, Inc.	2515 Village Lane Ste. #E	Cambria	93428	325	Fruit Syrups
Linn's Fruit Bin, Inc.	2515 Village Lane Ste. #E	Cambria	93428	355	Frozen Meats & Poultry
Linn's Fruit Bin, Inc.	2515 Village Lane Ste. #E	Cambria	93428	324	Fruit Pie Filling
PURE & SIMPLE	3850 RAMADA DR. C-3	PASO ROBLES	93446	55	Ready to Eat Cookies
PURE & SIMPLE	3850 RAMADA DR. C-3	PASO ROBLES	93446	51	Breads, Rolls, Buns
Chadmark Farms	27 Wellsona Rd.	Paso Robles	93446	272	Apple Juice
Chadmark Farms	27 Wellsona Rd.	Paso Robles	93446	279	Other Fresh Juices
Chadmark Farms	27 Wellsona Rd.	Paso Robles	93446	282	Apples & Juices
Chadmark Farms	27 Wellsona Rd.	Paso Robles	93446	289	Other Fruits & Juices
Chadmark Farms	27 Wellsona Rd.	Paso Robles	93446	300	Dried Fruits

California Department of Public Health - Food and Drug Branch
Firms in San Luis Obispo County with a Valid Processed Food Registration

SLO BAKED BAKERIES, INC.	267 TANK FARM RD.	SAN LUIS OBISPO	93401	51	Breads, Rolls, Buns
SLO BAKED BAKERIES, INC.	267 TANK FARM RD.	SAN LUIS OBISPO	93401	53	Ready to Eat Sweet Goods
SLO BAKED BAKERIES, INC.	267 TANK FARM RD.	SAN LUIS OBISPO	93401	56	Ready to Eat Pies
SLO BAKED BAKERIES, INC.	267 TANK FARM RD.	SAN LUIS OBISPO	93401	57	Dough for Sweet Goods
SLO BAKED BAKERIES, INC.	267 TANK FARM RD.	SAN LUIS OBISPO	93401	50	Bakery Products
FRED LEMOS DISTRIBUTORS	952 GRIFFIN	GROVER BEACH	93433	107	Tortillas
J. Lohr Winery Corporation	6169 Airport Rd.	Paso Robles	93446	279	Other Fresh Juices
All About Produce, Corp.	712 Fiero Lane Ste #30-31	San Luis Obispo	93401	51	Breads, Rolls, Buns
All About Produce, Corp.	712 Fiero Lane Ste #30-31	San Luis Obispo	93401	53	Ready to Eat Sweet Goods
All About Produce, Corp.	712 Fiero Lane Ste #30-31	San Luis Obispo	93401	54	Frozen Sweet Goods
All About Produce, Corp.	712 Fiero Lane Ste #30-31	San Luis Obispo	93401	56	Ready to Eat Pies
All About Produce, Corp.	712 Fiero Lane Ste #30-31	San Luis Obispo	93401	64	Frozen Cakes
All About Produce, Corp.	712 Fiero Lane Ste #30-31	San Luis Obispo	93401	65	Frozen Pies
All About Produce, Corp.	712 Fiero Lane Ste #30-31	San Luis Obispo	93401	66	Frozen Pastries
All About Produce, Corp.	712 Fiero Lane Ste #30-31	San Luis Obispo	93401	97	Other Beans
All About Produce, Corp.	712 Fiero Lane Ste #30-31	San Luis Obispo	93401	107	Tortillas
All About Produce, Corp.	712 Fiero Lane Ste #30-31	San Luis Obispo	93401	141	Syrups & Molasses
All About Produce, Corp.	712 Fiero Lane Ste #30-31	San Luis Obispo	93401	142	Honey
All About Produce, Corp.	712 Fiero Lane Ste #30-31	San Luis Obispo	93401	150	Butter & Butter Products
All About Produce, Corp.	712 Fiero Lane Ste #30-31	San Luis Obispo	93401	171	Fluid Whole Milk
All About Produce, Corp.	712 Fiero Lane Ste #30-31	San Luis Obispo	93401	172	Fluid Milk Products
All About Produce, Corp.	712 Fiero Lane Ste #30-31	San Luis Obispo	93401	203	Shell Eggs
All About Produce, Corp.	712 Fiero Lane Ste #30-31	San Luis Obispo	93401	241	Whole Spices
All About Produce, Corp.	712 Fiero Lane Ste #30-31	San Luis Obispo	93401	245	Herbs for Food Use
All About Produce, Corp.	712 Fiero Lane Ste #30-31	San Luis Obispo	93401	251	Extracts
All About Produce, Corp.	712 Fiero Lane Ste #30-31	San Luis Obispo	93401	254	Imitation Flavors
All About Produce, Corp.	712 Fiero Lane Ste #30-31	San Luis Obispo	93401	261	Standardized Salad Dressings
All About Produce, Corp.	712 Fiero Lane Ste #30-31	San Luis Obispo	93401	271	Citrus Fruit Juices
All About Produce, Corp.	712 Fiero Lane Ste #30-31	San Luis Obispo	93401	272	Apple Juice
All About Produce, Corp.	712 Fiero Lane Ste #30-31	San Luis Obispo	93401	279	Other Fresh Juices
All About Produce, Corp.	712 Fiero Lane Ste #30-31	San Luis Obispo	93401	284	Berries & Juices
All About Produce, Corp.	712 Fiero Lane Ste #30-31	San Luis Obispo	93401	296	Olives
All About Produce, Corp.	712 Fiero Lane Ste #30-31	San Luis Obispo	93401	299	Others
All About Produce, Corp.	712 Fiero Lane Ste #30-31	San Luis Obispo	93401	301	Apples

California Department of Public Health - Food and Drug Branch
Firms in San Luis Obispo County with a Valid Processed Food Registration

All About Produce, Corp.	712 Fiero Lane Ste #30-31	San Luis Obispo	93401	306	Figs
All About Produce, Corp.	712 Fiero Lane Ste #30-31	San Luis Obispo	93401	307	Dates
All About Produce, Corp.	712 Fiero Lane Ste #30-31	San Luis Obispo	93401	309	Others
All About Produce, Corp.	712 Fiero Lane Ste #30-31	San Luis Obispo	93401	320	Fruit Products
All About Produce, Corp.	712 Fiero Lane Ste #30-31	San Luis Obispo	93401	360	Nuts & Nut Products
All About Produce, Corp.	712 Fiero Lane Ste #30-31	San Luis Obispo	93401	371	Oil Stock & Oil seed
All About Produce, Corp.	712 Fiero Lane Ste #30-31	San Luis Obispo	93401	390	Produce - Fresh Fuits & Vegetables
All About Produce, Corp.	712 Fiero Lane Ste #30-31	San Luis Obispo	93401	399	Sprouts
All About Produce, Corp.	712 Fiero Lane Ste #30-31	San Luis Obispo	93401	401	Beans
All About Produce, Corp.	712 Fiero Lane Ste #30-31	San Luis Obispo	93401	409	Other Vegetables
All About Produce, Corp.	712 Fiero Lane Ste #30-31	San Luis Obispo	93401	416	Tomatoes
All About Produce, Corp.	712 Fiero Lane Ste #30-31	San Luis Obispo	93401	421	Beans
All About Produce, Corp.	712 Fiero Lane Ste #30-31	San Luis Obispo	93401	430	Processed & Cured Vegetable Products
All About Produce, Corp.	712 Fiero Lane Ste #30-31	San Luis Obispo	93401	453	Prepared Salads
THE SPICE HUNTER, INC.	184 SUBURBAN RD.	SAN LUIS OBISPO	93401	82	Dehydrated Breakfast Cereals
THE SPICE HUNTER, INC.	184 SUBURBAN RD.	SAN LUIS OBISPO	93401	241	Whole Spices
THE SPICE HUNTER, INC.	184 SUBURBAN RD.	SAN LUIS OBISPO	93401	242	Ground Spices
THE SPICE HUNTER, INC.	184 SUBURBAN RD.	SAN LUIS OBISPO	93401	243	Mixed Spices & Spice Salt Mixtures
THE SPICE HUNTER, INC.	184 SUBURBAN RD.	SAN LUIS OBISPO	93401	244	Salt
THE SPICE HUNTER, INC.	184 SUBURBAN RD.	SAN LUIS OBISPO	93401	245	Herbs for Food Use
THE SPICE HUNTER, INC.	184 SUBURBAN RD.	SAN LUIS OBISPO	93401	251	Extracts
THE SPICE HUNTER, INC.	184 SUBURBAN RD.	SAN LUIS OBISPO	93401	455	Dehydrated Dinners, Side Dishes & Soups
THE SPICE HUNTER, INC.	184 SUBURBAN RD.	SAN LUIS OBISPO	93401	70	Macaroni & Noodle Products
THE SPICE HUNTER, INC.	184 SUBURBAN RD.	SAN LUIS OBISPO	93401	240	Spices & Salt
CAL POLY STATE UNIVERSITY	1 GRAND AVE.	SAN LUIS OBISPO	93405	51	Breads, Rolls, Buns
CAL POLY STATE UNIVERSITY	1 GRAND AVE.	SAN LUIS OBISPO	93405	55	Ready to Eat Cookies
CAL POLY STATE UNIVERSITY	1 GRAND AVE.	SAN LUIS OBISPO	93405	58	Crackers
CAL POLY STATE UNIVERSITY	1 GRAND AVE.	SAN LUIS OBISPO	93405	131	Candy & Confectionary Products
CAL POLY STATE UNIVERSITY	1 GRAND AVE.	SAN LUIS OBISPO	93405	132	Chocolate & Cocoa Products
CAL POLY STATE UNIVERSITY	1 GRAND AVE.	SAN LUIS OBISPO	93405	265	Refrigerated Condiments
CAL POLY STATE UNIVERSITY	1 GRAND AVE.	SAN LUIS OBISPO	93405	269	Other Condiments
CAL POLY STATE UNIVERSITY	1 GRAND AVE.	SAN LUIS OBISPO	93405	314	Berries
CAL POLY STATE UNIVERSITY	1 GRAND AVE.	SAN LUIS OBISPO	93405	130	Candy, Chewing Gum, Chocolate, and Cocoa Products
FRITO-LAY, INC.	2250 HUTTON RD.	NIPOMO	93444	55	Ready to Eat Cookies

California Department of Public Health - Food and Drug Branch
Firms in San Luis Obispo County with a Valid Processed Food Registration

FRITO-LAY, INC.	2250 HUTTON RD.	NIPOMO	93444	58	Crackers
FRITO-LAY, INC.	2250 HUTTON RD.	NIPOMO	93444	100	Chips, Specialty & Snack Items
FRITO-LAY, INC.	2250 HUTTON RD.	NIPOMO	93444	360	Nuts & Nut Products
FRITO-LAY, INC.	2250 HUTTON RD.	NIPOMO	93444	100	Chips, Specialty & Snack Items
FRITO-LAY, INC.	2250 HUTTON RD.	NIPOMO	93444	356	Smoked Meats & Poultry
FRITO-LAY, INC.	2250 HUTTON RD.	NIPOMO	93444	189	Other Dried Milk Products
FRITO-LAY, INC.	2250 HUTTON RD.	NIPOMO	93444	459	Other Multiple Foods
CENTRAL COAST COFFEE ROASTING CO., INC.	1172 LOS OLIVOS AVE.	LOS OSOS	93402	32	Coffee, Roasted
FARB'S BAKERY, INC.	241 PISMO ST.	SAN LUIS OBISPO	93401	51	Breads, Rolls, Buns
WILLOWCREEK OLIVE OIL, LLC.	8530 VINEYARD DR.	PASO ROBLES	93446	372	Crude Vegetable Oils
PASO ALMONDS	3121 S. HIGUERA ST.	SAN LUIS OBISPO	93401	362	Shelled Nuts
PASO ALMONDS	3121 S. HIGUERA ST.	SAN LUIS OBISPO	93401	363	Nut Products
FOOD BANK COALITION OF SAN LUIS OBISPO	1820 RAILROAD RD.	OCEANO	93445	474	Multiple Food Warehouse
FOOD BANK COALITION OF SAN LUIS OBISPO	1820 RAILROAD RD.	OCEANO	93445	10	Soft Drinks and Waters
FOOD BANK COALITION OF SAN LUIS OBISPO	1820 RAILROAD RD.	OCEANO	93445	20	Beverage Bases
FOOD BANK COALITION OF SAN LUIS OBISPO	1820 RAILROAD RD.	OCEANO	93445	30	Coffee & Tea
FOOD BANK COALITION OF SAN LUIS OBISPO	1820 RAILROAD RD.	OCEANO	93445	50	Bakery Products
FOOD BANK COALITION OF SAN LUIS OBISPO	1820 RAILROAD RD.	OCEANO	93445	60	Custard & Cream Filled Sweet Goods
FOOD BANK COALITION OF SAN LUIS OBISPO	1820 RAILROAD RD.	OCEANO	93445	70	Macaroni & Noodle Products
FOOD BANK COALITION OF SAN LUIS OBISPO	1820 RAILROAD RD.	OCEANO	93445	80	Breakfast Cereals
FOOD BANK COALITION OF SAN LUIS OBISPO	1820 RAILROAD RD.	OCEANO	93445	100	Chips, Specialty & Snack Items
FOOD BANK COALITION OF SAN LUIS OBISPO	1820 RAILROAD RD.	OCEANO	93445	110	Processed Grains & Starch Products for Human Use
FOOD BANK COALITION OF SAN LUIS OBISPO	1820 RAILROAD RD.	OCEANO	93445	120	Prepared Mixes (Flour or Meal Base) DRY
FOOD BANK COALITION OF SAN LUIS OBISPO	1820 RAILROAD RD.	OCEANO	93445	130	Candy, Chewing Gum, Chocolate, and Cocoa Products
FOOD BANK COALITION OF SAN LUIS OBISPO	1820 RAILROAD RD.	OCEANO	93445	140	Syrups, Sugars, Honey
FOOD BANK COALITION OF SAN LUIS OBISPO	1820 RAILROAD RD.	OCEANO	93445	150	Butter & Butter Products
FOOD BANK COALITION OF SAN LUIS OBISPO	1820 RAILROAD RD.	OCEANO	93445	180	Dried Milk & Dried Milk Products
FOOD BANK COALITION OF SAN LUIS OBISPO	1820 RAILROAD RD.	OCEANO	93445	190	Ice Cream & Related Products
FOOD BANK COALITION OF SAN LUIS OBISPO	1820 RAILROAD RD.	OCEANO	93445	210	Fish & Fish Products
FOOD BANK COALITION OF SAN LUIS OBISPO	1820 RAILROAD RD.	OCEANO	93445	203	Shell Eggs
FOOD BANK COALITION OF SAN LUIS OBISPO	1820 RAILROAD RD.	OCEANO	93445	205	Imitation Egg Products
FOOD BANK COALITION OF SAN LUIS OBISPO	1820 RAILROAD RD.	OCEANO	93445	225	Shellfish & Crustacean Products
FOOD BANK COALITION OF SAN LUIS OBISPO	1820 RAILROAD RD.	OCEANO	93445	230	Smoked Fish, Shellfish & Crustaceans
FOOD BANK COALITION OF SAN LUIS OBISPO	1820 RAILROAD RD.	OCEANO	93445	240	Spices & Salt

California Department of Public Health - Food and Drug Branch
Firms in San Luis Obispo County with a Valid Processed Food Registration

FOOD BANK COALITION OF SAN LUIS OBISPO	1820 RAILROAD RD.	OCEANO	93445	250	Extracts & Flavors
FOOD BANK COALITION OF SAN LUIS OBISPO	1820 RAILROAD RD.	OCEANO	93445	260	Dressings & Condiments
FOOD BANK COALITION OF SAN LUIS OBISPO	1820 RAILROAD RD.	OCEANO	93445	270	Fresh Fruit Juices
FOOD BANK COALITION OF SAN LUIS OBISPO	1820 RAILROAD RD.	OCEANO	93445	290	Canned Fruits, Juices Concentrates & Nectars
FOOD BANK COALITION OF SAN LUIS OBISPO	1820 RAILROAD RD.	OCEANO	93445	300	Dried Fruits
FOOD BANK COALITION OF SAN LUIS OBISPO	1820 RAILROAD RD.	OCEANO	93445	310	Jams, Jellies, Preserves & Butters
FOOD BANK COALITION OF SAN LUIS OBISPO	1820 RAILROAD RD.	OCEANO	93445	320	Fruit Products
FOOD BANK COALITION OF SAN LUIS OBISPO	1820 RAILROAD RD.	OCEANO	93445	330	Animal Feeds/Pet Foods
FOOD BANK COALITION OF SAN LUIS OBISPO	1820 RAILROAD RD.	OCEANO	93445	340	Byproducts for Animal Feeds
FOOD BANK COALITION OF SAN LUIS OBISPO	1820 RAILROAD RD.	OCEANO	93445	350	Meat & Meat Products
FOOD BANK COALITION OF SAN LUIS OBISPO	1820 RAILROAD RD.	OCEANO	93445	360	Nuts & Nut Products
FOOD BANK COALITION OF SAN LUIS OBISPO	1820 RAILROAD RD.	OCEANO	93445	370	Vegetable Oil Seed, Oil Stock & Crude Oil
FOOD BANK COALITION OF SAN LUIS OBISPO	1820 RAILROAD RD.	OCEANO	93445	380	Refined Vegetable Oils, Veg. Shortenings & Margarines
FOOD BANK COALITION OF SAN LUIS OBISPO	1820 RAILROAD RD.	OCEANO	93445	390	Produce - Fresh Fuits & Vegetables
FOOD BANK COALITION OF SAN LUIS OBISPO	1820 RAILROAD RD.	OCEANO	93445	400	Frozen Vegetables & Frozen Vegetable Juices
FOOD BANK COALITION OF SAN LUIS OBISPO	1820 RAILROAD RD.	OCEANO	93445	410	Canned Vegetables & Canned Vegetable Juices
FOOD BANK COALITION OF SAN LUIS OBISPO	1820 RAILROAD RD.	OCEANO	93445	430	Processed & Cured Vegetable Products
FOOD BANK COALITION OF SAN LUIS OBISPO	1820 RAILROAD RD.	OCEANO	93445	440	Dry Dessert & Pudding Mixes
FOOD BANK COALITION OF SAN LUIS OBISPO	1820 RAILROAD RD.	OCEANO	93445	450	Multiple Foods
FOOD BANK COALITION OF SAN LUIS OBISPO	1820 RAILROAD RD.	OCEANO	93445	461	Food Use Items
FOOD BANK COALITION OF SAN LUIS OBISPO	1820 RAILROAD RD.	OCEANO	93445	463	Food Containers
FOOD BANK COALITION OF SAN LUIS OBISPO	1820 RAILROAD RD.	OCEANO	93445	471	Vitamin/Mineral Dietary Supplements
FOOD BANK COALITION OF SAN LUIS OBISPO	1820 RAILROAD RD.	OCEANO	93445	490	Infant, Junior, and Geriatric Foods
FOOD BANK COALITION OF SAN LUIS OBISPO	1820 RAILROAD RD.	OCEANO	93445	500	Dietary Specialties, Artificial Sweetners, Foods w/ Nutri
FOOD BANK COALITION OF SAN LUIS OBISPO	2212 GOLDEN HILL RD.	PASO ROBLES	93446	474	Multiple Food Warehouse
FOOD BANK COALITION OF SAN LUIS OBISPO	2212 GOLDEN HILL RD.	PASO ROBLES	93446	10	Soft Drinks and Waters
FOOD BANK COALITION OF SAN LUIS OBISPO	2212 GOLDEN HILL RD.	PASO ROBLES	93446	20	Beverage Bases
FOOD BANK COALITION OF SAN LUIS OBISPO	2212 GOLDEN HILL RD.	PASO ROBLES	93446	30	Coffee & Tea
FOOD BANK COALITION OF SAN LUIS OBISPO	2212 GOLDEN HILL RD.	PASO ROBLES	93446	50	Bakery Products
FOOD BANK COALITION OF SAN LUIS OBISPO	2212 GOLDEN HILL RD.	PASO ROBLES	93446	60	Custard & Cream Filled Sweet Goods
FOOD BANK COALITION OF SAN LUIS OBISPO	2212 GOLDEN HILL RD.	PASO ROBLES	93446	70	Macaroni & Noodle Products
FOOD BANK COALITION OF SAN LUIS OBISPO	2212 GOLDEN HILL RD.	PASO ROBLES	93446	80	Breakfast Cereals
FOOD BANK COALITION OF SAN LUIS OBISPO	2212 GOLDEN HILL RD.	PASO ROBLES	93446	90	Whold Grains & Beans - Bulk
FOOD BANK COALITION OF SAN LUIS OBISPO	2212 GOLDEN HILL RD.	PASO ROBLES	93446	100	Chips, Specialty & Snack Items

California Department of Public Health - Food and Drug Branch
Firms in San Luis Obispo County with a Valid Processed Food Registration

FOOD BANK COALITION OF SAN LUIS OBISPO	2212 GOLDEN HILL RD.	PASO ROBLES	93446	110	Processed Grains & Starch Products for Human Use
FOOD BANK COALITION OF SAN LUIS OBISPO	2212 GOLDEN HILL RD.	PASO ROBLES	93446	120	Prepared Mixes (Flour or Meal Base) DRY
FOOD BANK COALITION OF SAN LUIS OBISPO	2212 GOLDEN HILL RD.	PASO ROBLES	93446	130	Candy, Chewing Gum, Chocolate, and Cocoa Products
FOOD BANK COALITION OF SAN LUIS OBISPO	2212 GOLDEN HILL RD.	PASO ROBLES	93446	140	Syrups, Sugars, Honey
FOOD BANK COALITION OF SAN LUIS OBISPO	2212 GOLDEN HILL RD.	PASO ROBLES	93446	152	Butter Products
FOOD BANK COALITION OF SAN LUIS OBISPO	2212 GOLDEN HILL RD.	PASO ROBLES	93446	170	Fluid Milk & Fluid Milk Products
FOOD BANK COALITION OF SAN LUIS OBISPO	2212 GOLDEN HILL RD.	PASO ROBLES	93446	180	Dried Milk & Dried Milk Products
FOOD BANK COALITION OF SAN LUIS OBISPO	2212 GOLDEN HILL RD.	PASO ROBLES	93446	190	Ice Cream & Related Products
FOOD BANK COALITION OF SAN LUIS OBISPO	2212 GOLDEN HILL RD.	PASO ROBLES	93446	203	Shell Eggs
FOOD BANK COALITION OF SAN LUIS OBISPO	2212 GOLDEN HILL RD.	PASO ROBLES	93446	205	Imitation Egg Products
FOOD BANK COALITION OF SAN LUIS OBISPO	2212 GOLDEN HILL RD.	PASO ROBLES	93446	212	Frozen Fish Vertebrates
FOOD BANK COALITION OF SAN LUIS OBISPO	2212 GOLDEN HILL RD.	PASO ROBLES	93446	213	Canned Fish, Vertebrates
FOOD BANK COALITION OF SAN LUIS OBISPO	2212 GOLDEN HILL RD.	PASO ROBLES	93446	225	Shellfish & Crustacean Products
FOOD BANK COALITION OF SAN LUIS OBISPO	2212 GOLDEN HILL RD.	PASO ROBLES	93446	230	Smoked Fish, Shellfish & Crustaceans
FOOD BANK COALITION OF SAN LUIS OBISPO	2212 GOLDEN HILL RD.	PASO ROBLES	93446	240	Spices & Salt
FOOD BANK COALITION OF SAN LUIS OBISPO	2212 GOLDEN HILL RD.	PASO ROBLES	93446	250	Extracts & Flavors
FOOD BANK COALITION OF SAN LUIS OBISPO	2212 GOLDEN HILL RD.	PASO ROBLES	93446	260	Dressings & Condiments
FOOD BANK COALITION OF SAN LUIS OBISPO	2212 GOLDEN HILL RD.	PASO ROBLES	93446	270	Fresh Fruit Juices
FOOD BANK COALITION OF SAN LUIS OBISPO	2212 GOLDEN HILL RD.	PASO ROBLES	93446	410	Canned Vegetables & Canned Vegetable Juices
FOOD BANK COALITION OF SAN LUIS OBISPO	2212 GOLDEN HILL RD.	PASO ROBLES	93446	421	Beans
FOOD BANK COALITION OF SAN LUIS OBISPO	2212 GOLDEN HILL RD.	PASO ROBLES	93446	424	Root Vegetables
FOOD BANK COALITION OF SAN LUIS OBISPO	2212 GOLDEN HILL RD.	PASO ROBLES	93446	425	Vine & Ear Vegetables
FOOD BANK COALITION OF SAN LUIS OBISPO	2212 GOLDEN HILL RD.	PASO ROBLES	93446	426	Tomatoes
FOOD BANK COALITION OF SAN LUIS OBISPO	2212 GOLDEN HILL RD.	PASO ROBLES	93446	430	Processed & Cured Vegetable Products
FOOD BANK COALITION OF SAN LUIS OBISPO	2212 GOLDEN HILL RD.	PASO ROBLES	93446	440	Dry Dessert & Pudding Mixes
FOOD BANK COALITION OF SAN LUIS OBISPO	2212 GOLDEN HILL RD.	PASO ROBLES	93446	450	Multiple Foods
FOOD BANK COALITION OF SAN LUIS OBISPO	2212 GOLDEN HILL RD.	PASO ROBLES	93446	461	Food Use Items
FOOD BANK COALITION OF SAN LUIS OBISPO	2212 GOLDEN HILL RD.	PASO ROBLES	93446	463	Food Containers
FOOD BANK COALITION OF SAN LUIS OBISPO	2212 GOLDEN HILL RD.	PASO ROBLES	93446	471	Vitamin/Mineral Dietary Supplements
FOOD BANK COALITION OF SAN LUIS OBISPO	2212 GOLDEN HILL RD.	PASO ROBLES	93446	490	Infant, Junior, and Geriatric Foods
FOOD BANK COALITION OF SAN LUIS OBISPO	2212 GOLDEN HILL RD.	PASO ROBLES	93446	500	Dietary Specialties, Artificial Sweeteners, Foods w/ Nutri
COWBOY COOKIES N'GRUB	3486 SACRAMENTO DR. UNIT #D	SAN LUIS OBISPO	93401	111	Wheat Flour
COWBOY COOKIES N'GRUB	3486 SACRAMENTO DR. UNIT #D	SAN LUIS OBISPO	93401	117	Oatmeal
COWBOY COOKIES N'GRUB	3486 SACRAMENTO DR. UNIT #D	SAN LUIS OBISPO	93401	132	Chocolate & Cocoa Products

California Department of Public Health - Food and Drug Branch
Firms in San Luis Obispo County with a Valid Processed Food Registration

COWBOY COOKIES N'GRUB	3486 SACRAMENTO DR. UNIT #D	SAN LUIS OBISPO	93401	143	Sugars, Liquid & Dry
COWBOY COOKIES N'GRUB	3486 SACRAMENTO DR. UNIT #D	SAN LUIS OBISPO	93401	151	Butter
COWBOY COOKIES N'GRUB	3486 SACRAMENTO DR. UNIT #D	SAN LUIS OBISPO	93401	171	Fluid Whole Milk
COWBOY COOKIES N'GRUB	3486 SACRAMENTO DR. UNIT #D	SAN LUIS OBISPO	93401	203	Shell Eggs
COWBOY COOKIES N'GRUB	3486 SACRAMENTO DR. UNIT #D	SAN LUIS OBISPO	93401	242	Ground Spices
COWBOY COOKIES N'GRUB	3486 SACRAMENTO DR. UNIT #D	SAN LUIS OBISPO	93401	244	Salt
COWBOY COOKIES N'GRUB	3486 SACRAMENTO DR. UNIT #D	SAN LUIS OBISPO	93401	251	Extracts
COWBOY COOKIES N'GRUB	3486 SACRAMENTO DR. UNIT #D	SAN LUIS OBISPO	93401	284	Berries & Juices
COWBOY COOKIES N'GRUB	3486 SACRAMENTO DR. UNIT #D	SAN LUIS OBISPO	93401	304	Grapes (Raisins)
COWBOY COOKIES N'GRUB	3486 SACRAMENTO DR. UNIT #D	SAN LUIS OBISPO	93401	362	Shelled Nuts
COWBOY COOKIES N'GRUB	3486 SACRAMENTO DR. UNIT #D	SAN LUIS OBISPO	93401	366	Peanut Products
COWBOY COOKIES N'GRUB	3486 SACRAMENTO DR. UNIT #D	SAN LUIS OBISPO	93401	461	Food Use Items
MT. OLIVE COMPANY	3445 ADELAI DA RD.	PASO ROBLES	93446	35	Tea
MT. OLIVE COMPANY	3445 ADELAI DA RD.	PASO ROBLES	93446	51	Breads, Rolls, Buns
MT. OLIVE COMPANY	3445 ADELAI DA RD.	PASO ROBLES	93446	91	Wheat
MT. OLIVE COMPANY	3445 ADELAI DA RD.	PASO ROBLES	93446	93	Rice
MT. OLIVE COMPANY	3445 ADELAI DA RD.	PASO ROBLES	93446	96	Soy Beans
MT. OLIVE COMPANY	3445 ADELAI DA RD.	PASO ROBLES	93446	99	Barley
MT. OLIVE COMPANY	3445 ADELAI DA RD.	PASO ROBLES	93446	111	Wheat Flour
MT. OLIVE COMPANY	3445 ADELAI DA RD.	PASO ROBLES	93446	116	Rice
MT. OLIVE COMPANY	3445 ADELAI DA RD.	PASO ROBLES	93446	143	Sugars, Liquid & Dry
MT. OLIVE COMPANY	3445 ADELAI DA RD.	PASO ROBLES	93446	242	Ground Spices
MT. OLIVE COMPANY	3445 ADELAI DA RD.	PASO ROBLES	93446	245	Herbs for Food Use
MT. OLIVE COMPANY	3445 ADELAI DA RD.	PASO ROBLES	93446	261	Standardized Salad Dressings
MT. OLIVE COMPANY	3445 ADELAI DA RD.	PASO ROBLES	93446	289	Other Fruits & Juices
MT. OLIVE COMPANY	3445 ADELAI DA RD.	PASO ROBLES	93446	301	Apples
MT. OLIVE COMPANY	3445 ADELAI DA RD.	PASO ROBLES	93446	302	Peaches
MT. OLIVE COMPANY	3445 ADELAI DA RD.	PASO ROBLES	93446	309	Others
MT. OLIVE COMPANY	3445 ADELAI DA RD.	PASO ROBLES	93446	312	Apples
MT. OLIVE COMPANY	3445 ADELAI DA RD.	PASO ROBLES	93446	319	Other
MT. OLIVE COMPANY	3445 ADELAI DA RD.	PASO ROBLES	93446	321	Olives
MT. OLIVE COMPANY	3445 ADELAI DA RD.	PASO ROBLES	93446	362	Shelled Nuts
MT. OLIVE COMPANY	3445 ADELAI DA RD.	PASO ROBLES	93446	369	Edible Seed Products Raw
MT. OLIVE COMPANY	3445 ADELAI DA RD.	PASO ROBLES	93446	392	Leaf Vegetable

California Department of Public Health - Food and Drug Branch
Firms in San Luis Obispo County with a Valid Processed Food Registration

MT. OLIVE COMPANY	3445 ADELAI DA RD.	PASO ROBLES	93446	394	Root Vegetables
MT. OLIVE COMPANY	3445 ADELAI DA RD.	PASO ROBLES	93446	396	Tomatoes
MT. OLIVE COMPANY	3445 ADELAI DA RD.	PASO ROBLES	93446	397	Fresh Fruits
MT. OLIVE COMPANY	3445 ADELAI DA RD.	PASO ROBLES	93446	398	Mixed Vegetables
MT. OLIVE COMPANY	3445 ADELAI DA RD.	PASO ROBLES	93446	399	Sprouts
MT. OLIVE COMPANY	3445 ADELAI DA RD.	PASO ROBLES	93446	409	Other Vegetables
MT. OLIVE COMPANY	3445 ADELAI DA RD.	PASO ROBLES	93446	416	Tomatoes
MT. OLIVE COMPANY	3445 ADELAI DA RD.	PASO ROBLES	93446	429	Other Vegetables
MT. OLIVE COMPANY	3445 ADELAI DA RD.	PASO ROBLES	93446	471	Vitamin/Mineral Dietary Supplements
MT. OLIVE COMPANY	3445 ADELAI DA RD.	PASO ROBLES	93446	472	Herbal/Botanical Dietary Supplements
MT. OLIVE COMPANY	3445 ADELAI DA RD.	PASO ROBLES	93446	30	Coffee & Tea
MT. OLIVE COMPANY	3445 ADELAI DA RD.	PASO ROBLES	93446	50	Bakery Products
MT. OLIVE COMPANY	3445 ADELAI DA RD.	PASO ROBLES	93446	90	Whold Grains & Beans - Bulk
MT. OLIVE COMPANY	3445 ADELAI DA RD.	PASO ROBLES	93446	140	Syrups, Sugars, Honey
MT. OLIVE COMPANY	3445 ADELAI DA RD.	PASO ROBLES	93446	240	Spices & Salt
MT. OLIVE COMPANY	3445 ADELAI DA RD.	PASO ROBLES	93446	260	Dressings & Condiments
MT. OLIVE COMPANY	3445 ADELAI DA RD.	PASO ROBLES	93446	270	Fresh Fruit Juices
MT. OLIVE COMPANY	3445 ADELAI DA RD.	PASO ROBLES	93446	280	Frozen Fruits & Juices
MT. OLIVE COMPANY	3445 ADELAI DA RD.	PASO ROBLES	93446	300	Dried Fruits
MT. OLIVE COMPANY	3445 ADELAI DA RD.	PASO ROBLES	93446	310	Jams, Jellies, Preserves & Butters
MT. OLIVE COMPANY	3445 ADELAI DA RD.	PASO ROBLES	93446	320	Fruit Products
MT. OLIVE COMPANY	3445 ADELAI DA RD.	PASO ROBLES	93446	360	Nuts & Nut Products
MT. OLIVE COMPANY	3445 ADELAI DA RD.	PASO ROBLES	93446	370	Vegetable Oil Seed, Oil Stock & Crude Oil
MT. OLIVE COMPANY	3445 ADELAI DA RD.	PASO ROBLES	93446	390	Produce - Fresh Fuits & Vegetables
MT. OLIVE COMPANY	3445 ADELAI DA RD.	PASO ROBLES	93446	400	Frozen Vegetables & Frozen Vegetable Juices
MT. OLIVE COMPANY	3445 ADELAI DA RD.	PASO ROBLES	93446	410	Canned Vegetables & Canned Vegetable Juices
MT. OLIVE COMPANY	3445 ADELAI DA RD.	PASO ROBLES	93446	420	Dried & Dehydrated Vegetables
MT. OLIVE COMPANY	3445 ADELAI DA RD.	PASO ROBLES	93446	430	Processed & Cured Vegetable Products
MT. OLIVE COMPANY	3445 ADELAI DA RD.	PASO ROBLES	93446	70	Macaroni & Noodle Products
MT. OLIVE COMPANY	3445 ADELAI DA RD.	PASO ROBLES	93446	110	Processed Grains & Starch Products for Human Use
JOEBELLA COFFEE, LLC	8793 PLATA LANE STE.H	ATASCADERO	93422	32	Coffee, Roasted
JOEBELLA COFFEE, LLC	8793 PLATA LANE STE.H	ATASCADERO	93422	30	Coffee & Tea
McLINTOCKS ASSOCIATES	729 BUCKLEY RD C&D	SAN LUIS OBISPO	93401	243	Mixed Spices & Spice Salt Mixtures
McLINTOCKS ASSOCIATES	729 BUCKLEY RD C&D	SAN LUIS OBISPO	93401	269	Other Condiments

California Department of Public Health - Food and Drug Branch
Firms in San Luis Obispo County with a Valid Processed Food Registration

McLINTOCKS ASSOCIATES	729 BUCKLEY RD C&D	SAN LUIS OBISPO	93401	411	Beans
McLINTOCKS ASSOCIATES	729 BUCKLEY RD C&D	SAN LUIS OBISPO	93401	241	Whole Spices
SWEET EARTH ORGANIC CHOCOLATES	1491 MONTEREY ST.	SAN LUIS OBISPO	93401	132	Chocolate & Cocoa Products
SWEET EARTH ORGANIC CHOCOLATES	1491 MONTEREY ST.	SAN LUIS OBISPO	93401	130	Candy, Chewing Gum, Chocolate, and Cocoa Products
SWEET EARTH ORGANIC CHOCOLATES	1491 MONTEREY ST.	SAN LUIS OBISPO	93401	141	Syrups & Molasses
T. HORZEN, INC.	130 HIGH ST.	SAN LUIS OBISPO	93401	462	Manufactured Ice
COSTCO WHOLESALE CORPORATION	1540 FROOM RANCH WY.	SAN LUIS OBISPO	93401	30	Coffee & Tea
COSTCO WHOLESALE CORPORATION	1540 FROOM RANCH WY.	SAN LUIS OBISPO	93401	50	Bakery Products
COSTCO WHOLESALE CORPORATION	1540 FROOM RANCH WY.	SAN LUIS OBISPO	93401	53	Ready to Eat Sweet Goods
COSTCO WHOLESALE CORPORATION	1540 FROOM RANCH WY.	SAN LUIS OBISPO	93401	55	Ready to Eat Cookies
COSTCO WHOLESALE CORPORATION	1540 FROOM RANCH WY.	SAN LUIS OBISPO	93401	56	Ready to Eat Pies
COSTCO WHOLESALE CORPORATION	1540 FROOM RANCH WY.	SAN LUIS OBISPO	93401	58	Crackers
COSTCO WHOLESALE CORPORATION	1540 FROOM RANCH WY.	SAN LUIS OBISPO	93401	59	Other Bread Products
COSTCO WHOLESALE CORPORATION	1540 FROOM RANCH WY.	SAN LUIS OBISPO	93401	60	Custard & Cream Filled Sweet Goods
COSTCO WHOLESALE CORPORATION	1540 FROOM RANCH WY.	SAN LUIS OBISPO	93401	170	Fluid Milk & Fluid Milk Products
COSTCO WHOLESALE CORPORATION	1540 FROOM RANCH WY.	SAN LUIS OBISPO	93401	474	Multiple Food Warehouse
POLETTI-WALSH, INC.	3850 RAMADA DR. STE. #D-3	PASO ROBLES	93446	90	Whold Grains & Beans - Bulk
POLETTI-WALSH, INC.	3850 RAMADA DR. STE. #D-3	PASO ROBLES	93446	110	Processed Grains & Starch Products for Human Use
POLETTI-WALSH, INC.	3850 RAMADA DR. STE. #D-3	PASO ROBLES	93446	244	Salt
POLETTI-WALSH, INC.	3850 RAMADA DR. STE. #D-3	PASO ROBLES	93446	321	Olives
EARTHGRAINS BAKING COMPANIES INC	3877 LONG ST.	SAN LUIS OBISPO	93401	50	Bakery Products
ETROK ENTERPRISES, INC.	390 BUCKLEY RD. #F	SAN LUIS OBISPO	93401	50	Bakery Products
ETROK ENTERPRISES, INC.	390 BUCKLEY RD. #F	SAN LUIS OBISPO	93401	53	Ready to Eat Sweet Goods
ETROK ENTERPRISES, INC.	390 BUCKLEY RD. #F	SAN LUIS OBISPO	93401	59	Other Bread Products
ETROK ENTERPRISES, INC.	390 BUCKLEY RD. #F	SAN LUIS OBISPO	93401	55	Ready to Eat Cookies
ETROK ENTERPRISES, INC.	390 BUCKLEY RD. #F	SAN LUIS OBISPO	93401	51	Breads, Rolls, Buns
SKIPPING STONE PRODUCTIONS, LLC.	1335 RAILROAD	PASO ROBLES	93446	42	Wines
SKIPPING STONE PRODUCTIONS, LLC.	1335 RAILROAD	PASO ROBLES	93446	50	Bakery Products
TUSCALI OLIVE OIL, LLC.	595 HOLLYHOCK LANE	TEMPLETON	93465	381	Refined Vegetable Oils
LE Z RANCH	2350 NIDERER RD.	PASO ROBLES	93446	243	Mixed Spices & Spice Salt Mixtures
LE Z RANCH	2350 NIDERER RD.	PASO ROBLES	93446	245	Herbs for Food Use
FOXDALE FARM	6850 EAST HWY 41	TEMPLETON	93465	0	No Commodities on File
LBC ENTERPRISES, LLC.	2085 10TH ST. #D	LOS OSOS	93402	50	Bakery Products
TERRACE HILL OLIVE COMPANY	2620 CALIFORNIA POPPY LANE	SAN MIGUEL	93451	370	Vegetable Oil Seed, Oil Stock & Crude Oil

California Department of Public Health - Food and Drug Branch
Firms in San Luis Obispo County with a Valid Processed Food Registration

DOUGHBOY'S PIZZERIA	1800 GRAND AVE. STE. #N	GROVER BEACH	93433	50	Bakery Products
HOMESTEAD OLIVE RANCH	2550 HOMESTEAD RD.	TEMPLETON	93465	371	Oil Stock & Oil seed
BLACK MARKET CONDIMENT COMPANY	1400 RAILROAD ST. STE. #102	PASO ROBLES	93446	260	Dressings & Condiments
ALTA CRESTA ORCHARD & INN	6075 HIGH RIDGE RD.	PASO ROBLES	93446	372	Crude Vegetable Oils
Casa Pau Hana Olive Farm, LLC.	5330 RANCHO LA LOMA LINDA DR.	PASO ROBLES	93446	370	Vegetable Oil Seed, Oil Stock & Crude Oil
RED MOOSE COOKIE COMPANY	2531 VILLAGE LANE SUITES C&D	CAMBRIA	93428	50	Bakery Products
SAN LUIS OBISPO CONDIMENT COMPANY	709 FIERO LANE STE. #35	SAN LUIS OBISPO	93401	260	Dressings & Condiments
OLEA FARM	2985 TEMPLETON RD.	TEMPLETON	93465	370	Vegetable Oil Seed, Oil Stock & Crude Oil
OLEA FARM	2985 TEMPLETON RD.	TEMPLETON	93465	240	Spices & Salt
MEHLENBACHER'S TAFFY	6975 CHARDONNAY PLACE	PASO ROBLES	93446	130	Candy, Chewing Gum, Chocolate, and Cocoa Products
GRANNIOLA	3165 BROAD STREET #106	SAN LUIS OBISPO	93406	81	Breakfast Cereals - Ready to Eat
GRANNIOLA	3165 BROAD STREET #106	SAN LUIS OBISPO	93406	118	Granola Type Mixes
STEVE & MICHELLE ANGELLO	1150 PIKE LN	OCEANO	93445	265	Refrigerated Condiments
ORO ORGANICS, INC	4625 LA PANZA ROAD	CRESTON	93432	370	Vegetable Oil Seed, Oil Stock & Crude Oil
ORO ORGANICS, INC	4625 LA PANZA ROAD	CRESTON	93432	371	Oil Stock & Oil seed
ORO ORGANICS, INC	4625 LA PANZA ROAD	CRESTON	93432	370	Vegetable Oil Seed, Oil Stock & Crude Oil
O'BRIEN FAMILY TRUST	4330 CAMP 8 ROAD	PASO ROBLES	93446	372	Crude Vegetable Oils
O'BRIEN FAMILY TRUST	4330 CAMP 8 ROAD	PASO ROBLES	93446	296	Olives
PISMO BREWING COMPANY LLC	361 POMEROY AVE	PISMO BEACH	93449	40	Alcoholic Beverages
BRIAN'S ARTISAN BREAD COMPANY	4005 TRAFFIC WAY	ATASCADERO	93422	51	Breads, Rolls, Buns
BRIAN'S ARTISAN BREAD COMPANY	4005 TRAFFIC WAY	ATASCADERO	93422	50	Bakery Products

SECTION 4: BUY

Farmers' Markets

Community Supported Agriculture

SLO County Office of Education Food Service Directors

Food Bank Coalition Distribution Sites

Farmers' Markets in SLO County
Data from www.centralcoastgrown.org
March 18, 2011

Arroyo Grande:

1. Location: 1464 E. Grand Ave. & Courtland, Spencer's parking lot

Day & Time: Wed, 8:30A-11A

Manager: Diane Boyd

Phone: 805-544-9570

Mailing Address: P.O. Box 16058, San Luis Obispo, CA 93406

Website: www.slocountyfarmers.org

2. Location: City Hall Parking Lot, 215 Branch St.

Day & Time: Sat, 12-2:30 P

Manager: Diane Boyd

Phone: 805-544-9570

Mailing Address: P.O. Box 16058, San Luis Obispo, CA 93406

Website: www.slocountyfarmers.org

Atascadero:

Location: Sunken Gardens - East Mall & El Camino Real

Day & Time: Wed, 3P-6P

Manager: Sandra Dimond

Phone: 805-748-1109

Mailing Address: P.O. Box 1783, Paso Robles, CA 93447

Website: www.northcountyfarmersmarkets.com

Avila:

Location: Promenade at the Pier, Front St. between San Francisco & San Miguel, mid-April
- mid-Sept.

Day & Time: Fri, 4pm-8pm

Phone: 805-602-8266

Cambria:

Location: Vets Memorial Hall, Main St. & Cambria Dr.

Day & Time: Fri, 2:30P-5:00P, Nov 1st-April31st; 2:30-5:30p May1st- oct. 31

Phone: 805-924-1260

Website: www.dragonspringfarm.com

Cayucos:

Location: Vets Hall lot

Day & Time: Fri, 10A-12:30P, Memorial day - labor day

Phone: 805-235-9498

Mailing Address: P.O. Box 346, Cayucos, CA 93430

Grover Beach:

Location: Ramona Garden Park, off Grand between 10th and Ramona

Day & Time: Sundays, 3-6pm, June - Sep.

Phone: 805-602-8266

Los Osos:

Location: 2nd St. & Santa Maria

Day & Time: Mon, 2P-4:30P

Manager: Sandra Dimond

Phone: 805-748-1109

Mailing Address: P.O. Box 1783, Paso Robles, CA 93447

Web Site: www.northcountyfarmersmarkets.com

Morro Bay:

1. Location: 2650 Main St., Spencer's Parking Lot

Day & Time: Thurs, 2:30P-5P

Manager: Diane Boyd

Phone: 805-544-9570

Mailing Address: P.O. Box 16058, San Luis Obispo, CA 93406

Web Site: www.slocountyfarmers.org

2. Location: 800 block of Main St

Day & Time: Sat, 2:30P-6:00P

Phone: 805-216-7355

Mailing Address: 845 Embarcadero Ste D, Morro Bay, CA 93442

Web Site: www.morrobaychamberofcommerce.com

Nipomo:

Location: 1645 Trilogy Parkway, Monarch Dunes Country Club

Day & Time: Sun, 11:30A-2:30P

Manager: Glenn Johnson

Phone: 805-929-3081

Mailing Address: 685 Grade Mountain Rd., Nipomo, CA 93444

Website: www.nipomofarmersmarket.com

Paso Robles:

Website: www.northcountyfarmersmarkets.com

2. Location: Walmart East Parking lot, South River and Niblick roads

Day & Time: Fri, 9-12:30,

Manager: Judy Suschke

Phone: 805-748-0512

E-Mail Address: peartree@dishmail.net

Web Site: www.CountryFarmandCraftMarket.com

3. Location: 11th & Spring St., City Park
Time: Sat 9am-1pm
Manager: Judy Suschke
Phone: 805-748-0512
E-Mail Address: peartree@dishmail.com

Pismo:

Location: Main St. & Dolliver at City Lot
Day & Time: Wed, 5pm-8pm
Phone: 301-435-9006 or (805)305-7017

San Luis Obispo:

1. Location: 700-900 blocks Higuera St.
Day & Time: Thurs, 6:15-9PM
Manager: Peter Jankay
Phone: 805-544-9570
Mailing Address: P.O. Box 16058, San Luis Obispo, CA 93406
Website: www.slocountyfarmers.org

2. Location: Promenade near Cost Plus
Day & Time: Sat, 8-10:30am
Manager: Peter Jankay
Phone: 805-544-9570
Mailing Address: P.O. Box 16058, San Luis Obispo, CA 93406
Website: www.slocountyfarmers.org

3. Location: Kennedy Fitness, Tank Farm Rd
Day & Time: Sun, 10am-1pm

Santa Maria:

When: Wednesdays, 12:30p – 4:30p
Where: Broadway and Main St., Town Center

Shell Beach:

When: Saturdays, 9am – 1pm
Where: Dinosaur Caves Park @ Shell Beach Rd & Cliff Ave
contact: 305-7017
E-mail Address: www.shellbeachfarmersmarket@yahoo.com

Templeton:

Location: Templeton at the City Park on 6th & Crocker St.
Day & Time: Sat, 9A-12:30P
Manager: Sandra Dimond
Phone: 805-748-1109
Mailing Address: P.O. Box 1783, Paso Robles, CA 93447
Web Site: www.northcountyfarmersmarket.com

Community Supported Agriculture (CSA)

May 2011



Introduction

Community Supported Agriculture consists of a community of individuals who pledge support to a farm operation so that the farmland becomes, either legally or spiritually, the community's farm, with the growers and consumers providing mutual support and sharing the risks and benefits of food production. Typically, members or "share-holders" of the farm or garden pledge in advance to cover the anticipated costs of the farm operation and farmer's salary. In return, they receive shares in the farm's bounty throughout the growing season, as well as satisfaction gained from reconnecting to the land and participating directly in food production. Members also share in the risks of farming, including poor harvests due to unfavorable weather or pests. By direct sales to community members, who have provided the farmer with working capital in advance, growers receive better prices for their crops, gain some financial security, and are relieved of much of the burden of marketing.

Source: <http://www.nal.usda.gov/afsic/pubs/csa/csa.shtml>

- Local Harvest
<http://www.localharvest.org/csa/>
- NewFarm Farm Locator
<http://newfarm.org/farmlocator/index.php>
- Wilson College, Robyn Van En Center CSA Farm Database
<http://www.wilson.edu/wilson/asp/content.asp?id=1567>
- The Eat Well Guide
<http://www.eatwellguide.org/>

Search State and regional farm directories

- *Local Food Directories*. (2006). ATTRA - The National Sustainable Agriculture Information Service.
http://attra.ncat.org/attra-pub/localfood_dir.php
- *Central Coast Grown*-Central Coast Ag Network
<http://centralcoastgrown.net>

BeeWench Farm, Paso Robles, CA 805.423.7187
Canyon Ranch Farms, 10440 Santa Rita Road, Cayucos (805) 995-3660
Chase Farm, Paso Robles 805 239-9503
Clark Valley Organic Farm. 2310 Clark Valley Road, Los Osos 805-441-3438
Growing Beet Organic Garden, 2905 Burton Dr, Cambria 805 234-6145
Huasna Valley Farm, 5420 Huasna Townsite Road, Arroyo Grande 805 473-3827
Kiler Canyon Farm, Paso Robles 805 239-9503
Tutti Frutti Farm Share, San Miguel 805-315 5303
Nature's Touch Nursery and Harvest, Templeton, CA 805 434 3062
Nick Ranch, 13580 Avenales Ranch Road, Santa Margarita 805 438-4875
NPO-Nurses Pistachio Orchards, Paso Robles 805 227-0740

Rutiz Family Farms, 1075 The Pike, Arroyo Grande 805 481-3582
SloVeg, 397 Corbett Canyon Road, Arroyo Grande (805)709-3094
Spinaca, Paso Robles
Swift Subtropicals/Bear Creek Ranch, 3698 Clark Valley Rd, Cayucos (805) 528-2828
Thomas Hill Farm, Paso Robles 805.226.5888

NOTE: Despite multiple data bases, very few CSA's are actually listed and none is complete.
There is an opportunity to increase marketing potential by completing a comprehensive listing at
Central Coast Grown and having CCAN export that information to the other data bases.

**San Luis Obispo County Office of Education
2009-2010 Schools Directory**

ATASCADERO UNIFIED SCHOOL DISTRICT

5601 West Mall

Atascadero 93422

(805) 462-4200 · FAX (805) 466-2941

4,777 A.D.A.

E-mail addresses are first initial and full last name ~atas.ki2.ca.us

FOOD SERVICES DEPARTMENT

7125 Santa Lucia Road, Atascadero 93422

(805) 462-4256 I FAX (805) 466-9719

LOUISE MAYHEW

Assistant Director of Food Services

CAYUCOS ELEMENTARY SCHOOL DISTRICT

301 Cayucos Drive

Cayucos 93430

(805) 995-3694. Fax: (805) 995-2876

184 A.D.A. cayucoschool.com

(Working with Sue Thorson at San Luis Coastal to establish food service)

COAST UNIFIED SCHOOL DISTRICT

1350 Main Street

Cambria 93428

(805) 927-3880 · FAX (805) 927-0312

870 A.D.A. E-mail addresses are first initial and full last name rfcoastusd.org

LUCIA MAR UNIFIED SCHOOL DISTRICT

602 Orchard Street, Arroyo Grande 93420

(805) 474-3000. FAX (805) 481-1398

10,253 A.D.A.

www.lmusd.org E-mail addresses are usually first initial and full last name
~lmusd.org

FOOD SERVICES PURCHASING/WAREHOUSE

602 Orchard Street, Arroyo Grande 93420

(805) 474-3000 Ext. 1020 I FAX (805) 473-4215

JUY STEPHENS (NOT ACCURATE) Director

PASO ROBLES JOINT UNIFIED SCHOOL DISTRICT

Mail: P.O. Box 7010, Paso Robles 93447. Physical: 800 Niblick Road, Paso Robles
93446

(805) 238-2222. FAX (805) 237-3339. www.pasoschools.org

6,669 A.D.A. E-mail addresses are first initial and full last name ~,pasoschools.org

CULINARY ARTS ACADEMY

1900 Golden Hill Rd., PO Box 7010

Paso Robles 93447

(805) 237-3346 / FAX (805) 237-3449

RODNEY BLACKNER Director, Food Service

Riccomini, Phillip Culinary Academy Specialist

PLEASANT VALLEY JOINT UNION

ELEMENTARY SCHOOL DISTRICT

7000 Rancluta Canyon Road

San Miguel 93451

(805) 467-3453 · FAX (805) 467-2306

151 A.D.A.

SAN LUIS COASTAL UNIFIED SCHOOL DISTRICT

1500 Lizzie Street

San Luis Obispo 93401-3062

(805) 549-1200

6,900 Á.D.Á.

ww.slcsud.org E-mail addresses are first initial and last name (up to a total of 8 letters) ~,slcsud.org

FOOD SERVICES

(805) 596-4065 / FAX (805) 541-9192

SUE THORSON Director

KATHLEEN CHAVEZ Central Kitchen Supervisor

SAN MIGUEL JOINT UNION SCHOOL DISTRICT

1601 "L" Street, San Miguel 93451

(805) 467-3216 · FAX (805) 467-3410

393 A.D.A. E-mail addresses are first initial and full last name ~smjusd.ki2.ca.us

ADMINISTRATION

(805) 467-3216 / FAX (805) 467-3410

Cassidy, Nova Cafeteria

SHANDON JOINT UNIFIED SCHOOL DISTRICT

P. O. Box 79 (101 So. 1st Street), Shandon 93461

(805) 238-0286 · FAX (805) 238-0777

372 A.D.A.

Food Service through Paso Robles

TEMPLETON UNIFIED SCHOOL DISTRICT

960 Old County Road, Templeton 93465

(805) 434-5800 / FAX: (805) 434-5879

2,378 A.D.A E-mail addresses are first initial and full last name~tusdnet.net

FOOD SERVICE
(805) 434-5870/ FAX (805) 434-5871
JACKIE BOBSIN
Food Serice Director

SAN LUIS OBISPO COUNTY COMMUNITY COLLEGE DISTRICT
CUESTA COLLEGE
San Luis Obispo Campus
P.O. Box 8106
Highway One
San Luis Obispo
CA 93403-8106
(805) 546-3100
FAX (805) 546-3904

North County Campus
2800 Buena Vista Drive
Paso Robles, CA 93446
(805) 591-6200
FAX (805) 591-6373
www.cuesta.edu

Arroyo Grande Center
Arroyo Grande HS
c/o Cuesta College
San Luis Obispo
CA 93403-8106
(805) 474-3913

Nipomo Center
Nipomo High School
c/o Cuesta College
San Luis Obispo
CA 93403-8106
(805) 474-3355

Culinary Arts - North County
237-3346

CALIFORNIA POLYTECHNIC STATE UNIVERSITY
1 Grand Avenue
San Luis Obispo, CA 93407
(805) 756-1111
www.calpoly.edu

FOOD BANK COALITION OF SAN LUIS OBISPO COUNTY

FOOD ASSISTANCE PROGRAMS, OCTOBER 2011

Emergency Food Assistance Program (EFAP)

USDA

The Food Bank Coalition administers EFAP, a federally funded program and supplies food once a month to low-income families and individuals of all ages through its USDA Commodities Program. These distributions are held at community centers, churches, senior centers and veteran's halls throughout the county.

Distribution Locations & Times

Atascadero

Grange Hall – 5035 Palma Ave.

1st Wednesday/Month

10:30 AM to 11:30 AM

California Valley

CDS Building – 13080 Soda Lake Rd.

1st Friday/ Month

11:00 AM to 12:00 PM

Cambria

Santa Rosa Religious Education – 1174 Main St.

1st Thursday/Month

7:00 AM to 7:15 AM

Cayucos

Community Church – 60 3rd St.

3rd Wednesday/ Month

10:30 AM to 11:00 AM

Los Osos

People Helping People – 2160 Palisades Ave.

3rd Wednesday/Month

10:00 AM to 10:30 AM

Morro Bay

VFW Hall – 209 Surf St.

1st & 3rd Friday/Month

9:00 AM to 11:00 AM

Nipomo

St. Joseph's Church – 298 Thompson Ave.

2nd Tuesday/Month

9:00 AM to 10:00 AM

Oceano

Senior Center – 1580 Railroad Rd.

1st & 4th Thursday/Month

9:00 AM to 10:00 AM

Santa Margarita

Senior Center – 2210 H St.

1st Wednesday/ Month

9:30 AM to 10:30 AM

Shandon

United Methodist Church – 105 S. 2nd St.

1st Wednesday/Month

8:30 AM to 9:30 AM

Paso Robles

2nd Baptist Church – 1937 Riverside Ave.

1st Thursday/Month

8:30 AM to 10:30 AM

Grace Baptist – 535 Creston Rd.

2nd & 4th Thursday/Month

9:00 AM to 10:00 AM

Heritage Ranch Recreation Barn – 3945

Heritage Rd.

1st Tuesday/Month

1:00 PM to 5:00 PM

Loaves & Fishes – 2650 Spring St.

3rd Thursday/Month

5:30 PM to 7:30 PM

Oak Park Recreation – 3050 Park St.
2nd & 4th Wednesday/Month
8:00 AM to 9:00 AM
Villa Paseo Apartments – 2818 Ramada Dr.
3rd Tuesday/Month
2:00 PM to 3:00 PM

San Miguel

Community Center – 13th St. Bldg. 256
2nd Thursday/Month
11:30 AM to 12:00 PM

Senior Center – 601 12th St.
1st Thursday/Month
8:00 AM to 8:30 AM

San Luis Obispo

Mercy Church – 710 Aerovista Place
2nd Tuesday/Month
5:00 PM to 6:30 PM

Salvation Army – 815 Islay St.
1st Monday/Month
9:00 AM to 10:00 AM

Senior Center – 1445 Santa Rosa St.
2nd & 4th Tuesday/Month
8:30 AM to 9:15 AM

Mission View Health Center – 1425 Woodside Dr.
2nd & 4th Monday/Month
3:00 PM to 5:00 PM

Closed Sites

Paso Robles
Canyon Creek – 400 Oak Hill Rd.
2nd Friday/ Month
11 AM to 12 PM

Creekside Garden – 401 Oak Hill Rd.
2nd & 4th Wednesday/ Month
12 PM to 12:30 PM

Los Robles Terrace – 2940 Spring St.
2nd & 4th Monday/Month
1:30 PM to 2 PM

San Luis Obispo
Learning Center – 2060 Parker St.
4th Tuesday/ Month
9 AM to 10 AM

Templeton
Templeton Place – 1025 Peterson Ranch Rd.
1st & 3rd Wednesday/ Month
3 PM to 3:30 PM

Harvest Bag

Harvest Bag has a rich history of feeding people in need through a dedicated network of volunteers. The program was started in South County by a group of women in 1979. In the early years, these tireless citizens gathered leftover produce from local farmers, even harvesting the food themselves when needed. They also solicited food donations from local grocery stores and bakeries as well as contributions of food and monetary donations from local residents.

They established a Wednesday morning food giveaway at Soto Field in Arroyo Grande that continues to this day. There, dozens of volunteers pack several hundred bags of food for lines of people who show up each week. An additional several hundred bags are trucked to remote communities throughout the county.

Distribution Locations & Times

Arroyo Grande Soto Park – 1275 Ash St.
Every Wednesday/ Month
7:00 AM to 8:00 AM

Los Osos South Bay Community Center – 2160 Palisades Ave.
1st, 2nd, & 4th Wednesday/ Month
10:00 AM to 10:30 AM

Morro Bay VFW Hall – 209 Surf St.
Mon., Tues., Thurs., & Sat/ Weekly
9:45 AM to 10:15 AM

Nipomo Senior Center – 200 East Dana
Every Wednesday/ Month
8:00 AM to 8:30 AM

San Luis Obispo Zion Church – 1010 E. Foothill Blvd.
Every Wednesday/ Month

Healthy Food for Local Families

In an effort to educate recipients on the importance of balanced nutrition, and the impact of developing healthy eating habits at a young age, the Food Bank Coalition is working in partnership with the Network for Healthy California, SLO County Department of Education, SLO County Department of Social Services, local school administrators, staff and family volunteers. We strive to make sure that children don't lose focus on their school work, get frustrated, and skip homework once or repeatedly because they are hungry. A well-fed family is a happier, "healthier" family. Thanks to generous support by the Walmart Foundation and the Webster Family Foundation this program was able to expand county-wide feeding over 20,000 individuals.

Distribution Locations & Times

Atascadero

Atascadero Jr. High – 5601 West Mall St.
1st Monday/ Month
3:15 PM to 4:15 PM

Santa Rosa Elementary – 8655 Santa Rosa Rd.
2nd & 4th Friday/ Month
1:30 PM to 2:30 PM

California Valley

Carissa Plains – 9640 Carissa Plains
1st & 3rd Friday/ Month
3:00 PM to 5:00 PM

Morro Bay

Del Mar Elementary – 501 Sequoia St.
1st & 3rd Friday/ Month
2:30 PM to 3:30 PM

Oceano

Oceano Family Resource Center – 1511 19th St.
2nd & 4th Friday/ Month
3:00 PM to 4:30 PM

Paso Robles

Paso Robles Family Resource Center – 1802 Chestnut St.
2nd & 4th Thursday/ Month
2:30 PM to 4:00 PM

Virginia Peterson Elementary – 2501 Beechwood Dr.
1st & 3rd Thursday/ Month
3:00 PM to 5:00 PM

San Miguel

Lillian Larson – 1601 L St.
2nd & 4th Wednesday/ Month
3:30 PM to 5:30 PM

Santa Margarita

Carissa Plains Elementary – 9640 Carrisa Highway
1st & 3rd Friday/ Month
3:00 PM to 5:00 PM

San Luis Obispo

Pacheco Elementary – 261 Cuesta Dr.
2nd & 4th Tuesday/ Month
3:00 PM to 4:00 PM

Lovin' Lunchbox (SFSP)

Summer Feeding Service Program

Good nutrition is essential for effective learning every day, all year long. Just as learning does not end when school lets out, neither does the need for good nutrition. Children who aren't hungry learn better, act better, and feel better. The summer feeding programs help children get the nutrition they need to learn, play, and grow throughout the summer months when they are out of school.

Through SFSP, children nutrition programs can provide up to two healthy meals or snacks per day to children and teenagers age 18 years and younger at approved sites.

Distribution Locations & Times

Shandon Elementary School – YMCA
301 S. 1st St.
6/9/11 – 8/24/11
Lunch: 11:30 AM to 12:30 PM

Centennial Park – YMCA
600 Nickerson Dr.
6/20/11 – 8/19/11
Lunch: 11:30 AM to 12:30 PM
Snack: 3:30 PM to 4:00 PM

N. County Boys & Girls Club
600 26th St.
6/27/11 – 8/12/11
Lunch: 12:00 PM to 1:00 PM
Snack: 4:00 PM to 5:00 PM

Cambria Grammar School
3233 Main St.
6/6/11 – 8/19/11
Lunch: 11:30 AM to 12:30 PM
Snack: 3:30 PM to 4:00 PM

San Simeon
9490 Avonne Ave.
6/6/11 – 8/19/11
Lunch: 12:00 PM to 1:00 PM

Closed Sites

Oak Park YMCA – Oak Park Children Only
3050 Park St.
6/20/11 – 8/19/11
Lunch: 11:15 AM to 12:15 PM
Snack: 3:15 PM to 3:30 PM

Canyon Creek – Canyon Creek Children Only
400 Oak Hill Rd.
6/20/11 – 8/19/11
Lunch: 12:30 PM to 1:00 PM
Snack: 4:00 PM to 4:15 PM